



STELLENBOSCH

STELLENBOSCH • PNIEL • FRANSCHHOEK

MUNICIPALITY • UMASIPALA • MUNISIPALITEIT

Ref no.3/4/1/5

2017-08-22

NOTICE OF AN URGENT MEETING OF THE COUNCIL OF STELLENBOSCH MUNICIPALITY THURSDAY, 2018-04-19 AT 13:00

TO The Speaker, Cllr DD Joubert [Chairperson]
The Executive Mayor, Ald G Van Deventer (Ms)
The Deputy Executive Mayor, Cllr N Jindela

COUNCILLORS	F Adams	MC Johnson
	DS Arends	NS Louw
	FJ Badenhorst	N Mananga-Gugushe (Ms)
	GN Bakubaku-Vos (Ms)	C Manuel
	FT Bangani-Menziwa (Ms)	LM Maqeba
	PW Biscombe	NE McOmbring (Ms)
	PR Crawley (Ms)	XL Mdemka (Ms)
	A Crombie (Ms)	RS Nalumango (Ms)
	JN De Villiers	N Olayi
	MB De Wet	MD Oliphant
	R Du Toit (Ms)	SA Peters
	A Florence	WC Petersen (Ms)
	AR Frazenburg	MM Pietersen
	E Fredericks (Ms)	WF Pietersen
	E Groenewald (Ms)	SR Schäfer
	JG Hamilton	Ald JP Serdyn (Ms)
	AJ Hanekom	N Sinkinya (Ms)
	DA Hendrickse	P Sitshoti (Ms)
	JK Hendriks	Q Smit
	LK Horsband (Ms)	E Vermeulen (Ms)

Notice is hereby given in terms of Section 29, read with Section 18(2) of the *Local Government: Municipal Structures Act, 117 of 1998*, as amended, that an **URGENT MEETING** of the **COUNCIL** of **STELLENBOSCH MUNICIPALITY** will be held in the **COUNCIL CHAMBER, TOWN HOUSE, PLEIN STREET, STELLENBOSCH** on **THURSDAY, 2018-04-19** at **13:00** to consider the item on the Agenda.

SPEAKER
DD JOUBERT

A G E N D A
URGENT MEETING OF THE COUNCIL
OF STELLENBOSCH MUNICIPALITY
2018-04-19
TABLE OF CONTENTS

ITEM	SUBJECT	PAGE
1.	APPLICATION FOR LEAVE OF ABSENCE	
2.	DISCLOSURE OF INTEREST	
3.	DETERMINATION AND REDETERMINATION (TECHNICAL ALIGNMENT) OF MUNICIPAL BOUNDARIES IN TERMS OF SECTION 26 OF THE LOCAL GOVERNMENT: MUNICIPAL DEMARCATION ACT, 1998	1

4.	DETERMINATION AND REDETERMINATION (TECHNICAL ALIGNMENT) OF MUNICIPAL BOUNDARIES IN TERMS OF SECTION 26 OF THE LOCAL GOVERNMENT: MUNICIPAL DEMARCATION ACT, 1998
----	--

Collaborator No:

KPA Ref No:

Meeting Date: Urgent Council: 19 April 2018

1. SUBJECT: DETERMINATION AND REDETERMINATION (TECHNICAL ALIGNMENT) OF MUNICIPAL BOUNDARIES IN TERMS OF SECTION 26 OF THE LOCAL GOVERNMENT: MUNICIPAL DEMARCATION ACT, 1998

2. PURPOSE

The purpose of the item is to inform Council on the implications of the determination and redetermination of municipal boundaries to the Stellenbosch Municipality as contained in Circular 1/2018 and to consider the proposed response to this circular.

3. DELEGATED AUTHORITY

Council.

4. EXECUTIVE SUMMARY

The item is to inform Council about the amendments to the boundaries of Stellenbosch Municipality proposed by the Municipal Demarcation Board and the commencement of legal process, in particular the publication of notices to make known the intentions of the Municipal Demarcation Board to consider municipal boundary redeterminations and to invite all stakeholders affected by the proposed changes to submit their views and representations. It also provides proposed recommendations in response to the circular.

5. RECOMMENDATION

MAYORAL COMMITTEE MEETING: 2018-04-11: ITEM 5.3.2

RESOLVED

That it be recommended to Council:

(a) that Council approves the recommendations on the municipal boundary alignment proposals, as follows:

6.2.1 Proposed redetermination of municipal boundaries of Stellenbosch Local Municipality, Cape Winelands District Municipality and City of Cape Town Metropolitan Municipality by excluding a portion of Farm Bank Jonker 155 from the municipal area of Cape Town Metropolitan Municipality and including it into the municipal area of Stellenbosch Local Municipality. (Please see Annexure 2.1; DEM No: 6309)

RECOMMENDATION

The area is mountainous and not suitable for any development or agricultural activities. It is therefore recommended that the area remains within the City of Cape Municipality area.

- 6.2.2 Proposed redetermination of municipal boundaries of Stellenbosch Local Municipality, Cape Winelands District Municipality and City of Cape Town Metropolitan Municipality by excluding a portion of Farm 1386 and a portion of Farm 1565 from the municipal area of Cape Town Metropolitan Municipality and including it into the municipal area of Stellenbosch Local Municipality and excluding a portion of Farm Fairview 245 from the municipal area of Stellenbosch Local Municipality, Cape Winelands District Municipality and including it into the municipal boundary of the City of Cape Town Metropolitan Municipality. (Please See Annexure 2.2; DEM No: 6324)

RECOMMENDATION

Recommended for approval. The proposal only entails the realignment of the municipal boundaries to follow the actual erf boundaries or to incorporate small portions of land which forms part of a bigger actively farm or cultivated land within the municipal area it's to be incorporated into.

- 6.2.3 Proposed redetermination of municipal boundaries of Stellenbosch Local Municipality, Cape Winelands District Municipality and City of Cape Town Metropolitan Municipality by excluding a portion of the remainder of the Eerste Rivier Town Allotment from the municipal area of Stellenbosch Local Municipality and including it into the municipal area of Cape Town Metropolitan Municipality. (Please See Annexure 2.3; DEM No: 6329)

RECOMMENDATION

The city already encroached over the indicated demarcated municipal boundary of Stellenbosch.

Recommended to refuse. There is no desirability motivation given why the subject portion should be included within the City of Cape Town.

- 6.2.4 Proposed redetermination of municipal boundaries of Stellenbosch Local Municipality, Cape Winelands District Municipality and City of Cape Town Metropolitan Municipality by aligning the municipal boundary of City of Cape Town Metropolitan municipality and Stellenbosch Local Municipality to the southern boundary of Erf 222 of Raithby of Stellenbosch Allotment area. (Please See Annexure 2.4; DEM No: 6331)

RECOMMENDATION

Recommended for approval, considering that only the access road to the property which is part of the city and will be included into the City of Cape Town.

- 6.2.5 Proposed redetermination of municipal boundaries of Stellenbosch Local Municipality, Cape Winelands District Municipality and City of Cape Town Metropolitan Municipality by excluding a portion of the Farm Koopmanskloof Noord 216 from the municipal area of the City of Cape Town Metropolitan Municipality and including it into the municipal area of Stellenbosch Local Municipality and excluding a portion of the Farm Koopmans Kloof 221 from the municipal area of Stellenbosch Local Municipality and including it into the

municipal area of the City of Cape Town Metropolitan Municipality. (Please See Annexure 2.5; DEM No: 6333)

RECOMMENDATION

Recommended for approval. The proposal only entails the realignment of the municipal boundaries to follow the actual erf boundaries or to incorporate small portions of land which forms part of a bigger actively farm or cultivated land within the municipal area it's to be incorporated into.

- 6.2.6 Proposed redetermination of municipal boundaries of Stellenbosch Local Municipality, Cape Winelands District Municipality and City of Cape Town Metropolitan Municipality by excluding a portion of Portion 29 of the Farm Klein Bottelary 17 from the municipal area of the City of Cape Town Metropolitan Municipality and including it into the municipal area of Stellenbosch Local Municipality. (Please See Annexure 2.6; DEM No: 6335)

RECOMMENDATION

Recommended for approval. The proposal only entails the realignment of the municipal boundaries to follow the actual erf boundaries or to incorporate small portions of land which forms part of a bigger actively farm or cultivated land within the municipal area it's to be incorporated into.

- 6.2.7 Proposed redetermination of municipal boundaries of Stellenbosch Local Municipality, Cape Winelands District Municipality and City of Cape Town Metropolitan Municipality by excluding a portion of the Farm Klein Bottelary 17 from the municipal area of Stellenbosch Local Municipality and including it into the municipal area of City of Cape Town Metropolitan Municipality. (Please See Annexure 2.7; DEM No: 6336)

RECOMMENDATION

Recommended for approval. The proposal only entails the realignment of the municipal boundaries to follow the actual erf boundaries or to incorporate small portions of land which forms part of a bigger actively farm or cultivated land within the municipal area it's to be incorporated into.

- 6.2.8 Proposed redetermination of municipal boundaries of Stellenbosch Local Municipality, Cape Winelands District Municipality and City of Cape Town Metropolitan Municipality by excluding a portion of the remainder of Farm Haasendal 222 from the municipal area of the City of Cape Town Metropolitan Municipality and including it into the municipal area of Stellenbosch Local Municipality. (Please See Annexure 2.8; DEM No: 6337)

RECOMMENDATION

That Council refuses the proposed boundary amendment, for the following reasons:

- the relevant portion of property is surrounded by built up areas and will be under pressure for development in the near future;
- future proposals for urban development on the relevant property will not be in line with the Stellenbosch Municipal Spatial Development

Framework and be located well outside of any of the demarcated urban edges of Stellenbosch Municipality; and

- Stellenbosch Municipality will not be able to provide any municipal services on the relevant portion of property.

and that the relevant portion of property should therefore remain within the boundary of the City of Cape Town Metropolitan Municipality.

- 6.2.9 Proposed redetermination of municipal boundaries of Stellenbosch Local Municipality, Cape Winelands District Municipality and City of Cape Town Metropolitan Municipality by excluding portions 99, 106, 109 and 112 of the remainder of Farm Haasendal 222 from the municipal area of Stellenbosch Local Municipality and including it into the municipal area of the City of Cape Town Metropolitan Municipality. (Please see Annexure 2.9; DEM No: 6338)

RECOMMENDATION

Not supported. The proposal was already previously refused for incorporation into the City of Cape Town Municipal area.

- 6.2.10 Proposed redetermination of municipal boundaries of Stellenbosch Local Municipality, Cape Winelands District Municipality and City of Cape Town Metropolitan Municipality by excluding Farm 1528 from the municipal area of Stellenbosch Local Municipality and including it into the municipal area of the City of Cape Town Metropolitan Municipality. (Please See Annexure 2.10; DEM No: 6340)

RECOMMENDATION

Not supported. It is an industrial area which contributes to the Stellenbosch economy.

- 6.2.11 Proposed redetermination of municipal boundaries of Stellenbosch Local Municipality, Cape Winelands District Municipality and City of Cape Town Metropolitan Municipality by excluding a portion of Farm Vredenburg 696 from the municipal area of Stellenbosch Local Municipality and including it into the municipal area of the City of Cape Town Metropolitan Municipality. (2) Proposed redetermination of municipal boundaries of Stellenbosch Local Municipality, Cape Winelands District Municipality and City of Cape Town Metropolitan Municipality by excluding a portion of Farm Vredenburg 696 from the municipal area of the City of Cape Town Metropolitan Municipality and including it into the municipal area of Stellenbosch Local Municipality. (Please See Annexure 2.11; DEM No: 6341)

RECOMMENDATION

Recommended for approval. The proposal only entails the realignment of the municipal boundaries to follow the actual erf boundaries or to incorporate small portions of land which forms part of a bigger actively farm or cultivated land within the municipal area it's to be incorporated into.

- 6.2.12 Proposed redetermination of municipal boundaries of Stellenbosch Local Municipality, Cape Winelands District Municipality and City of Cape Town Metropolitan Municipality by excluding a portion of Farm 1531 and the Farm Driksberg 717 and the Farm Drie Wagte 1325 from the municipal area of the City of Cape Town Metropolitan Municipality and including it into the

municipal area of Stellenbosch Local Municipality. (Please See Annexure 2.12; DEM No: 6342)

RECOMMENDATION

Supported. Access to property is already obtained from Stellenbosch Municipality area.

- 6.2.13 Proposed redetermination of municipal boundaries of Stellenbosch Local Municipality, Cape Winelands District Municipality and City of Cape Town Metropolitan Municipality by excluding a portion of Farm Helfor 721 from the municipal area of Stellenbosch Local Municipality and including it into the municipal area of the City of Cape Town Metropolitan Municipality. (Please See Annexure 2.13; DEM No: 6343)

RECOMMENDATION

Not supported.

- 6.2.14 Proposed redetermination of municipal boundaries of Drakenstein Local Municipality and Stellenbosch Local Municipality by excluding a portion of the Farm Boschendal 1674 from the municipal area of Drakenstein Local Municipality and including it into the municipal area of Stellenbosch Local Municipality. (Please See Annexure 2.14; DEM No: 6350)

RECOMMENDATION

Supported. It is already an actively formed property of which the greater portion of the property is situated within the Stellenbosch Municipal area.

- 6.2.15 Proposed redetermination of municipal boundaries of Stellenbosch Local Municipality (WC024), Cape Winelands District Municipality (DC02) and City of Cape Town Metropolitan Municipality (CPT) by excluding a portion of farm 1386 and a portion of farm 1565 from the municipal area of the City of Cape Town Metropolitan Municipality (CPT) and including them into the municipal area of Stellenbosch Local Municipality (WC024), Cape Winelands District Municipality (DC02) and excluding a portion of the farm Fairview 245 from the municipal area of Stellenbosch Local Municipality (WC024), Cape Winelands District Municipality (DC02) and including it into the municipal area of the City of Cape Town Metropolitan Municipality (CPT). (Please See Annexure 2.15; DM No: 6325)

RECOMMENDATION

Recommended for approval. The proposal only entails the realignment of the municipal boundaries to follow the actual erf boundaries or to incorporate small portions of land which forms part of a bigger actively farm or cultivated land within the municipal area it's to be incorporated into.

- 6.2.16 Proposed redetermination of municipal boundaries of Stellenbosch Local Municipality (WC024), Cape Winelands District Municipality (DC02) and City of Cape Town Metropolitan Municipality (CPT) by excluding a portion of the farm Koopmans Kloof 221 from the municipal area of Stellenbosch Local Municipality (WC024), Cape Winelands District Municipality (DC02) and including it into the municipal area of the City of Cape Town Metropolitan Municipality (CPT). (Please See Annexure 2.16; DM No: 6334)

RECOMMENDATION

Recommended for approval. The proposal only entails the realignment of the municipal boundaries to follow the actual erf boundaries or to incorporate small portions of land which forms part of a bigger actively farm or cultivated land within the municipal area it's to be incorporated into.

- 6.2.17 Proposed redetermination of municipal boundaries of Stellenbosch Local Municipality (WC024), Cape Winelands District Municipality (DC02) and City of Cape Town Metropolitan Municipality (CPT) by excluding a portion of farm 1386 and a portion of farm 1565 from the municipal area of the City of Cape Town Metropolitan Municipality (CPT) and including them into the municipal area of Stellenbosch Local Municipality (WC024), Cape Winelands District Municipality (DC02) and excluding a portion of the farm Fairview 245 from the municipal area of Stellenbosch Local Municipality (WC024), Cape Winelands District Municipality (DC02) and including it into the municipal area of the City of Cape Town Metropolitan Municipality (CPT). (Please See Annexure 2.17; DM No: 6324)

RECOMMENDATION

Recommended for approval. The proposal only entails the realignment of the municipal boundaries to follow the actual erf boundaries or to incorporate small portions of land which forms part of a bigger actively farm or cultivated land within the municipal area it's to be incorporated into.

- 6.2.18 Proposed redetermination of municipal boundaries of Stellenbosch Local Municipality (WC024), Cape Winelands District Municipality (DC02) and City of Cape Town Metropolitan Municipality (CPT) by excluding a portion of farm Fairview 245 from the municipal area of Stellenbosch Local Municipality (WC024), Cape Winelands District Municipality (DC02) and including it into the municipal area of the City of Cape Town Metropolitan Municipality (CPT) and by excluding a portion of the farm 250 from the municipal area of the City of Cape Town Metropolitan Municipality (CPT) and including it into the municipal area of Stellenbosch Local Municipality (WC024), Cape Winelands District Municipality (DC02). (Please See Annexure 2.18; DM No: 6339)

RECOMMENDATION

Not supported. The portion of land is an actively farmed land portion situated within Stellenbosch Municipality.

- (b) that Council delegates the Municipal Manager to act on its behalf in communicating its decision on the above as input, in terms of Section 26 of the Local Government: Municipal Demarcation Act, 1998, as requested by the Municipal Demarcation Board in its Circular (1/2018), dated 2018-03-26, before the applicable closing date to submit comment.

6. DISCUSSION / CONTENTS**6.1 Background**

South Africa's Constitution (1996) sets out a vision for local government and requires of local government to provide equitable and efficient services, build local democracy, promote social and economic development, collect revenue, ensure

safe and healthy environments, and create a generally viable and sustainable system of local government.

The drawing of new municipal boundaries was one of the first steps in a local government transformation process that aims to give substance to the Constitution's vision.

Demarcation was and it not meant to solve all the problems that municipalities face, but set the structural conditions within which the other processes of transforming and developing local government can take place. The above is an on-going process

6.2 Discussion

The item deals with the amendments to the boundaries of Stellenbosch Municipality proposed by the Municipal Demarcation Board as included in the Circular: 1/2018 attached as **ANNEXURE 1**.

Circular 1/2018 informs all stakeholders about the commencement of the legal process, in particular the publication of notices to make known the intentions of the Municipal Demarcation Board to consider municipal boundary redeterminations, in terms of Section 26 of the Local Government: Municipal Demarcation Act (1998) and to invite municipalities affected by the proposed changes to submit their views and representations.

The municipal boundary redetermination programme focus on technical boundary alignment detailing the activities and broad framework as outlined in Circular 1/2018 which outline all stages left until the process is concluded

The following proposals in terms of Circular 1/2018 affects Stellenbosch:

Find below the proposals in terms of Circular 1/2018 and the suggested recommendations in response.

6.2.1 Proposed redetermination of municipal boundaries of Stellenbosch Local Municipality, Cape Winelands District Municipality and City of Cape Town Metropolitan Municipality by excluding a portion of Farm Bank Jonker 155 from the municipal area of Cape Town Metropolitan Municipality and including it into the municipal area of Stellenbosch Local Municipality. (Please see Annexure 2.1; DEM No: 6309)

RECOMMENDATION

The area is mountainous and not suitable for any development or agricultural activities. It is therefor recommended that the area remains within the City of Cape Municipality area.

6.2.2 Proposed redetermination of municipal boundaries of Stellenbosch Local Municipality, Cape Winelands District Municipality and City of Cape Town Metropolitan Municipality by excluding a portion of Farm 1386 and a portion of Farm 1565 from the municipal area of Cape Town Metropolitan Municipality and including it into the municipal area of Stellenbosch Local Municipality and excluding a portion of Farm Fairview 245 from the municipal area of Stellenbosch Local Municipality, Cape Winelands District Municipality and including it into the municipal boundary of the City of Cape Town Metropolitan Municipality. (Please See Annexure 2.2; DEM No: 6324)

RECOMMENDATION

Recommend for approval. The proposal only entails the realignment of the municipal boundaries to follow the actual erf boundaries or to incorporate small portions of land which forms part of a bigger actively farm or cultivated land within the municipal area its to be incorporated into.

- 6.2.3 Proposed redetermination of municipal boundaries of Stellenbosch Local Municipality, Cape Winelands District Municipality and City of Cape Town Metropolitan Municipality by excluding a portion of the remainder of the Eerste Rivier Town Allotment from the municipal area of Stellenbosch Local Municipality and including it into the municipal area of Cape Town Metropolitan Municipality. (Please See Annexure 2.3; DEM No: 6329)

RECOMMENDATION

The city already encroached over the indicated demarcated municipal boundary of Stellenbosch.

Recommended to refuse. There is no desirability motivation given why the subject portion should be included within the City of Cape Town.

- 6.2.4 Proposed redetermination of municipal boundaries of Stellenbosch Local Municipality, Cape Winelands District Municipality and City of Cape Town Metropolitan Municipality by aligning the municipal boundary of City of Cape Town Metropolitan municipality and Stellenbosch Local Municipality to the southern boundary of Erf 222 of Raithby of Stellenbosch Allotment area. (Please See Annexure 2.4; DEM No: 6331)

RECOMMENDATION

Recommend for approval considering that only the access road to the property which is part of the city and will be included into the City of Cape Town.

- 6.2.5 Proposed redetermination of municipal boundaries of Stellenbosch Local Municipality, Cape Winelands District Municipality and City of Cape Town Metropolitan Municipality by excluding a portion of the Farm Koopmanskloof Noord 216 from the municipal area of the City of Cape Town Metropolitan Municipality and including it into the municipal area of Stellenbosch Local Municipality and excluding a portion of the Farm Koopmans Kloof 221 from the municipal area of Stellenbosch Local Municipality and including it into the municipal area of the City of Cape Town Metropolitan Municipality. (Please See Annexure 2.5; DEM No: 6333)

RECOMMENDATION

Recommend for approval. The proposal only entails the realignment of the municipal boundaries to follow the actual erf boundaries or to incorporate small portions of land which forms part of a bigger actively farm or cultivated land within the municipal area its to be incorporated into.

- 6.2.6 Proposed redetermination of municipal boundaries of Stellenbosch Local Municipality, Cape Winelands District Municipality and City of Cape Town Metropolitan Municipality by excluding a portion of Portion 29 of the Farm

Klein Bottelary 17 from the municipal area of the City of Cape Town Metropolitan Municipality and including it into the municipal area of Stellenbosch Local Municipality. (Please See Annexure 2.6; DEM No: 6335)

RECOMMENDATION

Recommend for approval. The proposal only entails the realignment of the municipal boundaries to follow the actual erf boundaries or to incorporate small portions of land which forms part of a bigger actively farm or cultivated land within the municipal area its to be incorporated into.

- 6.2.7 Proposed redetermination of municipal boundaries of Stellenbosch Local Municipality, Cape Winelands District Municipality and City of Cape Town Metropolitan Municipality by excluding a portion of the Farm Klein Bottelary 17 from the municipal area of Stellenbosch Local Municipality and including it into the municipal area of City of Cape Town Metropolitan Municipality. (Please See Annexure 2.7; DEM No: 6336)

RECOMMENDATION

Recommend for approval. The proposal only entails the realignment of the municipal boundaries to follow the actual erf boundaries or to incorporate small portions of land which forms part of a bigger actively farm or cultivated land within the municipal area its to be incorporated into.

- 6.2.8 Proposed redetermination of municipal boundaries of Stellenbosch Local Municipality, Cape Winelands District Municipality and City of Cape Town Metropolitan Municipality by excluding a portion of the remainder of Farm Haasendal 222 from the municipal area of the City of Cape Town Metropolitan Municipality and including it into the municipal area of Stellenbosch Local Municipality. (Please See Annexure 2.8; DEM No: 6337)

RECOMMENDATION

Recommended for approval, considering that the property already forms part of Farm No. 222, Stellenbosch, with is located within the Stellenbosch Municipal boundary.

- 6.2.9 Proposed redetermination of municipal boundaries of Stellenbosch Local Municipality, Cape Winelands District Municipality and City of Cape Town Metropolitan Municipality by excluding portions 99, 106, 109 and 112 of the remainder of Farm Haasendal 222 from the municipal area of Stellenbosch Local Municipality and including it into the municipal area of the City of Cape Town Metropolitan Municipality. (Please see Annexure 2.9; DEM No: 6338)

RECOMMENDATION

Not supported. The proposal was already previously refused for incorporation into the City of Cape Town Municipal area.

- 6.2.10 Proposed redetermination of municipal boundaries of Stellenbosch Local Municipality, Cape Winelands District Municipality and City of Cape Town Metropolitan Municipality by excluding Farm 1528 from the municipal area of Stellenbosch Local Municipality and including it into the municipal area of the

City of Cape Town Metropolitan Municipality. (Please See Annexure 2.10; DEM No: 6340)

RECOMMENDATION

Not supported. It is an industrial area which contributes to the Stellenbosch economy.

- 6.2.11 Proposed redetermination of municipal boundaries of Stellenbosch Local Municipality, Cape Winelands District Municipality and City of Cape Town Metropolitan Municipality by excluding a portion of Farm Vredenburg 696 from the municipal area of Stellenbosch Local Municipality and including it into the municipal area of the City of Cape Town Metropolitan Municipality. (2) Proposed redetermination of municipal boundaries of Stellenbosch Local Municipality, Cape Winelands District Municipality and City of Cape Town Metropolitan Municipality by excluding a portion of Farm Vredenburg 696 from the municipal area of the City of Cape Town Metropolitan Municipality and including it into the municipal area of Stellenbosch Local Municipality. (Please See Annexure 2.11; DEM No: 6341)

RECOMMENDATION

Recommend for approval. The proposal only entails the realignment of the municipal boundaries to follow the actual erf boundaries or to incorporate small portions of land which forms part of a bigger actively farm or cultivated land within the municipal area its to be incorporated into.

- 6.2.12 Proposed redetermination of municipal boundaries of Stellenbosch Local Municipality, Cape Winelands District Municipality and City of Cape Town Metropolitan Municipality by excluding a portion of Farm 1531 and the Farm Driksberg 717 and the Farm Drie Wagte 1325 from the municipal area of the City of Cape Town Metropolitan Municipality and including it into the municipal area of Stellenbosch Local Municipality. (Please See Annexure 2.12; DEM No: 6342)

RECOMMENDATION

Supported. Access to property is already obtained from Stellenbosch Municipality area.

- 6.2.13 Proposed redetermination of municipal boundaries of Stellenbosch Local Municipality, Cape Winelands District Municipality and City of Cape Town Metropolitan Municipality by excluding a portion of Farm Helfor 721 from the municipal area of Stellenbosch Local Municipality and including it into the municipal area of the City of Cape Town Metropolitan Municipality. (Please See Annexure 2.13; DEM No: 6343)

RECOMMENDATION

Not supported.

- 6.2.14 Proposed redetermination of municipal boundaries of Drakenstein Local Municipality and Stellenbosch Local Municipality by excluding a portion of the Farm Boschendal 1674 from the municipal area of Drakenstein Local Municipality and including it into the municipal area of Stellenbosch Local Municipality. (Please See Annexure 2.14; DEM No: 6350)

RECOMMENDATION

Supported. It is already an actively formed property of which the greater portion of the property is situated within the Stellenbosch Municipal area.

- 6.2.15 Proposed redetermination of municipal boundaries of Stellenbosch Local Municipality (WC024), Cape Winelands District Municipality (DC02) and City of Cape Town Metropolitan Municipality (CPT) by excluding a portion of farm 1386 and a portion of farm 1565 from the municipal area of the City of Cape Town Metropolitan Municipality (CPT) and including them into the municipal area of Stellenbosch Local Municipality (WC024), Cape Winelands District Municipality (DC02) and excluding a portion of the farm Fairview 245 from the municipal area of Stellenbosch Local Municipality (WC024), Cape Winelands District Municipality (DC02) and including it into the municipal area of the City of Cape Town Metropolitan Municipality (CPT). (Please See Annexure 2.15; DM No: 6325)

RECOMMENDATION

Recommend for approval. The proposal only entails the realignment of the municipal boundaries to follow the actual erf boundaries or to incorporate small portions of land which forms part of a bigger actively farm or cultivated land within the municipal area its to be incorporated into.

- 6.2.16 Proposed redetermination of municipal boundaries of Stellenbosch Local Municipality (WC024), Cape Winelands District Municipality (DC02) and City of Cape Town Metropolitan Municipality (CPT) by excluding a portion of the farm Koopmans Kloof 221 from the municipal area of Stellenbosch Local Municipality (WC024), Cape Winelands District Municipality (DC02) and including it into the municipal area of the City of Cape Town Metropolitan Municipality (CPT). (Please See Annexure 2.16; DM No: 6334)

RECOMMENDATION

Recommend for approval. The proposal only entails the realignment of the municipal boundaries to follow the actual erf boundaries or to incorporate small portions of land which forms part of a bigger actively farm or cultivated land within the municipal area its to be incorporated into.

- 6.2.17 Proposed redetermination of municipal boundaries of Stellenbosch Local Municipality (WC024), Cape Winelands District Municipality (DC02) and City of Cape Town Metropolitan Municipality (CPT) by excluding a portion of farm 1386 and a portion of farm 1565 from the municipal area of the City of Cape Town Metropolitan Municipality (CPT) and including them into the municipal area of Stellenbosch Local Municipality (WC024), Cape Winelands District Municipality (DC02) and excluding a portion of the farm Fairview 245 from the municipal area of Stellenbosch Local Municipality (WC024), Cape Winelands District Municipality (DC02) and including it into the municipal area of the City of Cape Town Metropolitan Municipality (CPT). (Please See Annexure 2.17; DM No: 6324)

RECOMMENDATION

Recommend for approval. The proposal only entails the realignment of the municipal boundaries to follow the actual erf boundaries or to incorporate small portions of land which forms part of a bigger actively farm or cultivated land within the municipal area its to be incorporated into.

- 6.2.18 Proposed redetermination of municipal boundaries of Stellenbosch Local Municipality (WC024), Cape Winelands District Municipality (DC02) and City of Cape Town Metropolitan Municipality (CPT) by excluding a portion of farm Fairview 245 from the municipal area of Stellenbosch Local Municipality (WC024), Cape Winelands District Municipality (DC02) and including it into the municipal area of the City of Cape Town Metropolitan Municipality (CPT) and by excluding a portion of the farm 250 from the municipal area of the City of Cape Town Metropolitan Municipality (CPT) and including it into the municipal area of Stellenbosch Local Municipality (WC024), Cape Winelands District Municipality (DC02). (Please See Annexure 2.18; DM No: 6339)

RECOMMENDATION

Not supported. The portion of land is an actively farmed land portion situated within Stellenbosch Municipality.

It is envisaged that the process will be concluded by August 2018 when the final boundaries are handed over to the IEC.

6.3 Financial Implications

No information at this stage.

6.4 Legal Implications

To be determined at a later stage.

6.5 Staff Implications

This report has no staff implications to the Municipality.

6.6 Previous / Relevant Council Resolutions

None

6.7 Risk Implications

To be determined at a later stage.

6.8 Comments from Senior Management

None

6.8.1 Director: Infrastructure Services

None

6.8.2 Director: Planning and Economic Development

That the implications of Circular 1/2018 in terms of Stellenbosch Municipality be discussed by Council and subsequently a submission be made to the Municipal Demarcation Board based on the outcome of the discussions.

6.8.3 Director: Community and Protection Services

None

6.8.4 Director: Strategic and Corporate Services

None

6.8.5 Director Human Settlements and Property Management

None

6.8.6 Chief Financial Officer:

None

6.8.7 Municipal Manager:

Request to submit item to Mayco on 2018-04-04.

ANNEXURES

Annexure 1: Circular 1/2018: Determination and Redetermination (Technical Alignment) of Municipal Boundaries in terms of Section 26 of the Local Government: Municipal Demarcation Act, 1998.

Annexure 1:

Circular 1/2018 - Determination and Redetermination (Technical Alignment) of Municipal Boundaries in terms of Section 26 of the Local Government: Municipal Demarcation Act, 1998.

CIRCULAR 1 OF 2018

To: Minister of Cooperative Governance and Traditional Affairs
 MECs of Provincial Departments responsible for Local Government
 Chairpersons of National & Provincial Houses of Traditional Leaders
 President of South African Local Government Association
 Chairperson of Independent Electoral Commission
 Mayors of Metropolitan, District and Local Municipalities

Cc: HOD's of Provincial Departments responsible for Local Government
 DG's of Provincial Departments responsible for Local Government
 Municipal Managers
 Chief Surveyor General
 Chief Electoral Officer
 Chief Executive Officer of SALGA
 Statistician – General
 Members of extended Boundaries, Powers and Function Committee
 Members of Local Elections Technical Committee
 Other Stakeholders

Dear Sir/Madam,

CIRCULAR 1/2018: DETERMINATION AND REDETERMINATION (TECHNICAL ALIGNMENTS) OF MUNICIPAL BOUNDARIES IN TERMS OF SECTION 26 OF THE LOCAL GOVERNMENT: MUNICIPAL DEMARCATION ACT, 1998.

PURPOSE

1. To inform all the Municipal Demarcation Board (MDB) stakeholders about the commencement of the legal process particularly the publication of notices to make known the intention of the MDB to consider municipal boundary redeterminations in terms of Section 26 of the Local Government: Municipal Demarcation Act of 1998 (MDA)
2. To invite all stakeholders affected by the proposed boundary changes to submit their views and representations.

INTRODUCTION

3. The Municipal Demarcation Board (MDB) embarked on a municipal boundary assessment during 2016. Phase one of this project entailed a desktop analysis of all municipal boundaries. The project aimed to identify what is referred to as technical cadastre misalignment / split settlements / split farms / split traditional areas. The exercise identified 1075 cases of boundary misalignments.
4. Phase two of this project entailed consultation with key stakeholders and further analysis. The MDB consulted with the following stakeholders Independent Electoral Commission, Chief Surveyor General, and Statistics South Africa, Provincial Executive Councils, National House of Traditional Leaders etc. The outcome of phase two was 163 cases excluding all cases affecting traditional areas.
5. The MDB decided not to proceed with cases affecting traditional areas for a number of reasons:
 - a. Lack of legal proclamations confirming the spatial jurisdiction of the areas of traditional communities. This alone poses a threat to the work of the MDB as municipal boundary misalignments may cause unnecessary contestations and civil unrests over land ownership disputes in rural areas.
 - b. The Department of Traditional Affairs in collaboration of Department of Rural Development and Land Reform are still busy with a national project of reconstituting traditional councils. The project is envisaged to produce, the following amongst others:
 - i. Validated and verified spatial data for traditional council areas, and
 - ii. Proclamations defining the spatial jurisdiction of Traditional Council Areas.
 - c. An absence of the above results in MDB using unverified data, which aspect may lead to adverse unintended consequences and more misalignments. Even more, this can spark inter-tribal conflicts and lead to boundary instability in rural areas.
6. Phase three entailed consultation with GIS and planning officials from municipalities. The intention here was for them to share their local knowledge

with the MDB on how the misalignments could be resolved. The outcome of this phase was 154 cases which included submissions made by municipalities.

7. In the period between November and December 2017, the MDB conducted onsite visits (in loco inspections) with the intention to confirm and identify municipal boundary misalignment cases and also to gather information about the cases and prepare for community meetings.
8. Between January and February 2018, the MDB consulted with communities, including farming communities, affected by technical misalignments involving mainly split settlements and split farms.
9. At these sessions, MDB presented the technical misalignment cases, including scheduled activities and timeframes, and afforded members of the affected communities and stakeholders an opportunity to make comments on these cases and or propose alternate configurations where possible.

Table 1- Summary Community consultations

Province	Number of meetings
Eastern cape	1
Gauteng	5
Kwazulu-Natal	6
Limpopo	1
Mpumalanga	4
Total	17

Table 2- Summary Consultations with farm owners

province	Number of meetings
Free state	4
Gauteng	2
Kwazulu-Natal	6
Mpumalanga	1
North west	2

Northern cape	2
Western cape	3
Total	20

PUBLICATION OF NOTICES IN TERMS OF SECTION 26 OF MDA

10. The MDB consolidated all comments and inputs from community and stakeholder consultation meetings and the Board was able to determine which cases would be considered for possible municipal boundary correction or re-determination.
11. Out of the 154 cases the Board resolved to proceed with 106. In terms of section 26 of the MDA, MDB will publish notices in relevant newspapers during this week. A list of all cases is attached hereto. Table 3 below provides a summary in terms of number of cases per category per province.
12. When MDB publishes notices in terms of Section 26 of the MDA, all affected communities and stakeholders, including interested individuals, organisations and institutions are invited to submit written representations or views on the matters referred to in the notice to the Board within 30 days from the date of publication of the newspaper notice. No submissions received after the closing date will be considered.
13. After the closing date, the MDB will consider all views and representations received. Thereafter, the Board will decide to either investigate, or to hold further public meetings or re-determine the boundaries in terms of Section 21 of MDA. It is envisaged that section 21 notices will be published in Provincial Gazettes by June 2018. In this instance the Board will provide another opportunity for anyone aggrieved by a determination of the Board to submit objections.

Table 3 - Summary of Cases proceeding to Section 26 of MDA

PROVINCE	TOTAL BOUNDARY	SPLIT SETTLEME NTS	CADASTRE MISALIGN MENT	SPLIT FARMS	SPLIT TRADITIONA L AREAS

	MISALIGNMENTS				
Eastern Cape	7	0	6	0	1
Free State	10	2	6	2	0
Gauteng	5	4	0	1	0
KwaZulu Natal	28	1	11	16	0
Limpopo	5	0	4	0	1
Mpumalanga	5	5	0	0	0
North West	9	0	7	2	0
Northern Cape	7	0	4	3	0
Western Cape	30	0	24	6	0
TOTAL	106	12	62	30	2

14. To create awareness on this process, the MDB will be broadcasting messages on radio, posting messages on social media and posting information on MDB's website.

ROLE OF STAKEHOLDERS AND THE PUBLIC IN RESPONSE TO SECTION 26 PUBLICATION

15. Notices were also sent to the MEC for local government in the province concerned, all affected municipalities, the magistrates concerned; and the provincial Houses of Traditional Leaders inviting them to submit written views and representations as it is a requirement in terms of the section 26(3) of the MDA.
16. Affected municipalities are urged to submit views and representations supported by a council resolution in terms of the section 26 of the MDA.

17. Affected municipalities are requested to partner with the MDB to distribute and display contents of the notice in the affected areas. It will also be appreciated if this circular could be circulated through ward committees, CDW's, youth volunteers and other community based structures to ensure wide accessibility by the broader community.
18. To ensure that information on the proposed redeterminations reaches all affected members of the public it would be appreciated if all other stakeholders could assist by displaying the notice on your premises and, where possible, the notices can also be displayed at any other appropriate public places such as police stations, the magistrate's offices, offices of traditional leaders, taxi and bus terminals, pension pay points, shopping malls in the affected areas.
19. Municipalities are requested to, on behalf of the MDB accept submissions from members of the public who may be unable to make use of communication platforms provided by the MDB for submitting views and representations and forward them to MDB within the stipulated period.

BROAD DEMARCATION PROCESS

20. The municipal boundary re-determination programme focusing on technical boundary alignment detailing the activities and broad timeframes is outlined in Table 4 below. This outlines all the stages left until the process is concluded. The MDB is looking at concluding this process by August 2018 when the final boundaries are handed over to the IEC.

Table 4: Broad programme for the technical municipal boundary re-determination process:

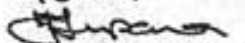
PROCESS	DATE	TASK	RESPONSIBILITY
Consultation Process – Pre Legal Process	January – February 2018	Consultation with affected Communities	MDB

PROCESS	DATE	TASK	RESPONSIBILITY
LEGAL PROCESS: INTENTION TO CONSIDER PROPOSALS – SECTION 26 & 27 of MDB	March 2018	Publish intention to consider proposals and process submissions	MDB
LEGAL PROCESS: CONDUCT INVESTIGATIONS – SECTION 29 & 18 of MDA	April – May 2018	Consideration of Public inputs and determine or re-determine municipal boundaries	MDB
LEGAL PROCESS: PUBLICATION FOR OBJECTION- SECTION 21 of MDA	June - July 2018	Publication of re-determination and consideration of objections	MDB
LEGAL PROCESS: CONFIRM, VARY OR WITHDRAW RE- DETERMINATION – SECTION 21(5) of MDA	July 2018	Confirm, vary or withdraw re-determination and final gazetting	MDB
Legal Process: Section 23 of MDA	August 2018	IEC and MECs gazette Section 23 notices.	IEC & MEC

CONCLUSION

21. The MDB is committed to meaningful citizen engagement and would like to urge all our stakeholders to assist the MDB in any way possible to ensure that all affected members of the public participate in this process.

Regards,


JANE THUPANA

CHAIRPERSON: MUNICIPAL DEMARCATION BOARD

DATE: 26/03/2018

IMPORTANT INFORMATION

Members of the public are invited to submit written representations and views to:

The Municipal Demarcation Board

Private Bag x123

Centurion

0046

South Africa

Fax: 012-3422480

E-mail: registry@demarcation.org.za

Representations and views must reach the above office within 30 days of the publication of the notices in newspapers.

Email submissions must be sent to registry@demarcation.org.za, submissions sent to any other email address will not be considered. Written representations and views must be based on the criteria provided for in Sections 24 and 25 of the Demarcation Act. Submission must include the name, surname and address of person making a submission. The relevant reference number (DEM/Map number) must please be quoted in any correspondence with the Board.

A map for each DEM Number can be downloaded from the MDB's web-site (www.demarcation.org.za), or can be obtained by sending an email to daniel@demarcation.org.za or by sending a fax to 012-3422480 or by calling the following numbers:

PROVINCE	CONTACT	TELEPHONE NUMBER
Eastern Cape	Ayanda Monkhe	0871504423
Free State	Thabiso Plank	0871504428
Gauteng	Daniel Sebake	0871504429
Kwazulu-Natal	Liz Mazibuko	0871504431
Limpopo	Tshifhiwa Nethanani	0871504427
Mpumalanga	Hester Marais	0871504430
North West	Srniso Dlamini	0871504434
Northern Cape	Mthobisi Manzini	0871504432
Western Cape	Fazel Hoosen	0871504424

PUBLICATION OF NOTICES IN TERMS OF SECTION 26 OF MDA

PROVINCE	DEM NUMBER	AFFECTED MUNICIPALITIES	DESCRIPTION
Eastern Cape	DEM5028	Ngqushwa Local Municipality, Buffalo City Metropolitan Municipality, Amathole District Municipality	Proposed redetermination of the municipal boundaries of Ngqushwa Local Municipality (EC126), Amathole District Municipality (DC12), Buffalo City Metropolitan Municipality (BUF), by excluding the remaining portion of Zimbaba Location from the municipal area of Ngqushwa Local Municipality (EC126), and by including it into the municipal area of Buffalo City Metropolitan Municipality

PROVINCE	DEM NUMBER	AFFECTED MUNICIPALITIES	DESCRIPTION
			(BUF). The proposed boundary is to be aligned to the valley south of Zimbaba Location.
Eastern Cape	DEM5031	Inxuba Yethemba Local Municipality, Blue Crane Route Local Municipality, Chris Hani District Municipality, Sarah Baartman District Municipality	<p>1. Proposed redetermination of the municipal boundaries of Inxuba Yethemba Local Municipality (EC131), Chris Hani District Municipality (DC13), Blue Crane Route Local Municipality (EC102), Sarah Baartman District Municipality (DC10), by excluding a portion of the farm Sneeuwbergs Kloof 2 from the municipal area of Inxuba Yethemba Local Municipality (EC131), Chris Hani District Municipality (DC13) and by including it into the municipal area of Blue Crane Route Local Municipality (EC102), Sarah Baartman District Municipality (DC10).</p> <p>2. Proposed redetermination of the municipal boundaries of Inxuba Yethemba Local Municipality (EC131), Chris Hani District Municipality</p>

PROVINCE	DEM NUMBER	AFFECTED MUNICIPALITIES	DESCRIPTION
			(DC13), Blue Crane Route Local Municipality (EC102), Sarah Baartman District Municipality (DC10), by excluding a portion of the farm Grootvlei 447 from the municipal area of Blue Crane Route Local Municipality (EC102), Sarah Baartman District Municipality (DC10) and by including it into the municipal area of Inxuba Yethemba Local Municipality (EC131), Chris Hani District Municipality (DC13).
Eastern Cape	DEM5032	Buffalo City Metropolitan Municipality, Great Kei Local Municipality, Amathole District Municipality	1. Proposed redetermination of the municipal boundaries of Great Kei Local Municipality (EC123), Amathole District Municipality (DC12), Buffalo City Metropolitan Municipality (BUF), by excluding a portion of portion 3 of Farm 433 from the municipal area of Buffalo City Metropolitan Municipality (BUF), and by including it into the municipal area of Great Kei Local Municipality

PROVINCE	DEM NUMBER	AFFECTED MUNICIPALITIES	DESCRIPTION
			<p>(EC123), Amathole District Municipality (DC12).</p> <p>2. Proposed redetermination of the municipal boundaries of Great Kei Local Municipality (EC123), Amathole District Municipality (DC12), Buffalo City Metropolitan Municipality (BUF), by excluding portion 3 of farm 443, portion 2 of farm Grootboom 19 from the municipal area of Great Kei Local Municipality (EC123), Amathole District Municipality (DC12) and by including them into the municipal area of Buffalo City Metropolitan Municipality (BUF).</p>
Eastern Cape	DEM5113	Walter Sisulu Local Municipality, Enoch Mgijima Local Municipality, Joe Gqabi District Municipality, Chris Hani District Municipality	Proposed redetermination of the municipal boundaries of Walter Sisulu Local Municipality (EC145), Joe Gqabi District Municipality (DC14), Enoch Mgijima Local Municipality (EC139), Chris Hani District Municipality (DC13), by excluding a portion of portion 1 of Farm 111, portion of portion 12 of

PROVINCE	DEM NUMBER	AFFECTED MUNICIPALITIES	DESCRIPTION
			farm Groot Stryd Poort 109, portion of portion 7 of Groot Stryd Poort 109 from the municipal area of Enoch Mjijima Local Municipality (EC139), Chris Hani District Municipality (DC13), and by including them into the municipal area of Walter Sisulu Local Municipality (EC145), Joe Gqabi District Municipality (DC14).
Eastern Cape	DEM5158	Dr Beyers Naude Local Municipality, Sundays River Valley Local Municipality	Proposed redetermination of the municipal boundaries of Dr Beyers Naude Local Municipality (EC101) and Sunday's River Valley Local Municipality (EC106), by excluding a portion of the farm Paarden Laaghte 62, portion of the farm Blaaubosch Kuil 669 from the municipal area of Dr Beyers Naude Local Municipality (EC101) and by including them into the municipal area of Sunday's River Valley Local Municipality (EC106).

PROVINCE	DEM NUMBER	AFFECTED MUNICIPALITIES	DESCRIPTION
Eastern Cape	DEM5191	Ndlambe Local Municipality, Makana Local Municipality	<p>1. Proposed redetermination of the municipal boundaries of Ndlambe Local Municipality (EC105), Makana Local Municipality (EC104), by excluding a portion of farm Union 220 from the municipal area of Ndlambe Local Municipality (EC105), and by including it into the municipal area of Makana Local Municipality (EC104).</p> <p>2. Proposed redetermination of the municipal boundaries of Ndlambe Local Municipality (EC105), Makana Local Municipality (EC104) by excluding a portion of the farm Bushfontein 548 from the municipal area of Makana Local Municipality (EC104) by including it into the municipal area of Ndlambe Local Municipality (EC105).</p> <p>3. Proposed redetermination of the municipal boundaries of Ndlambe Local</p>

PROVINCE	DEM NUMBER	AFFECTED MUNICIPALITIES	DESCRIPTION
			<p>Municipality (EC105), Makana Local Municipality (EC104) by excluding a portion of farm Salem 498 from the municipal area of Makana Local Municipality (EC104) and by including it into the municipal area of Ndlambe Local Municipality (EC105).</p> <p>4. Proposed redetermination of the municipal boundaries of Ndlambe Local Municipality (EC105), Makana Local Municipality (EC104) by excluding a portion of farm Salem 498 from the municipal area of Ndlambe Local Municipality (EC105) and by including it into the municipal area of Makana Local Municipality (EC104).</p>
Eastern Cape	DEM5192	Makana Local Municipality, Ndlambe Local Municipality	1. Proposed redetermination of the municipal boundaries of Ndlambe Local Municipality (EC105), Makana Local Municipality (EC104), by excluding portions of the farm Albany

PROVINCE	DEM NUMBER	AFFECTED MUNICIPALITIES	DESCRIPTION
			<p>RD 666, farm Spring Grove 295 from the municipal area of Ndlambe Local Municipality (EC105), and by including them into the municipal area of Makana Local Municipality (EC104), proposed redetermination of the municipal boundaries of Ndlambe Local Municipality (EC105), Makana Local Municipality (EC104).</p> <p>2. Proposed redetermination of the municipal boundaries of Ndlambe Local Municipality (EC105), Makana Local Municipality (EC104), by excluding portions of farm Albany RD 666, farm Spring Grove 295 from the municipal area of Makana Local Municipality (EC104) and by including them into the municipal area of Ndlambe Local Municipality (EC105).</p>

PROVINCE	DEM NUMBER	AFFECTED MUNICIPALITIES	DESCRIPTION
Free State	DEM5300	Phumelela Local Municipality, Mafube Local Municipality, Thabo Mofutsanyane District Municipality, Fezile Dabi District Municipality	Proposed redetermination of the municipal boundaries of Mafube Local Municipality (FS205), Fezile Dabi District Municipality (DC20), Phumelela Local Municipality (FS195) and Thabo Mofutsanyane District Municipality (DC19) by excluding a portion of the farm Robbertz Drift 322 from the municipal areas of Mafube Local Municipality (FS205) and Fezile Dabi District Municipality (DC20) and by including it into the municipal areas of Phumelela Local Municipality (FS195) and Thabo Mofutsanyane District Municipality (DC19).
Free State	DEM5301	Tswelopele Local Municipality, Matjhabeng Local Municipality	Proposed redetermination of the municipal boundaries of Tswelopele Local Municipality (FS183) and Matjhabeng Local Municipality (FS184) by excluding a portion of portion 38 of the farm Sommerville 324 from the municipal area of Matjhabeng Local Municipality (FS184) and by

PROVINCE	DEM NUMBER	AFFECTED MUNICIPALITIES	DESCRIPTION
			including it into the municipal area of Tswelopele Local Municipality (FS183)
Free State	DEM5302	Phumelela Local Municipality, Mafube Local Municipality, Thabo Mofutsanyane District Municipality, Fezile Dabi District Municipality	Proposed redetermination of the municipal boundaries of Mafube Local Municipality (FS205), Fezile Dabi District Municipality (DC20), Phumelela Local Municipality (FS195) and Thabo Mofutsanyane District Municipality (DC19) by excluding portions of farms Prinshof 384 and Middenin 22 from the municipal areas of Mafube Local Municipality (FS205) and Fezile Dabi District Municipality (DC20) and by including them into the municipal areas of Phumelela Local Municipality (FS195) and Thabo Mofutsanyane District Municipality (DC19) and by excluding portions of the farms Uitzicht 313 and Middenin 22 from the municipal areas of Phumelela Local Municipality (FS195) and Thabo Mofutsanyane District Municipality (DC19)

PROVINCE	DEM NUMBER	AFFECTED MUNICIPALITIES	DESCRIPTION
			and by including them into the municipal areas of Mafube Local Municipality (FS205) and Fezile Dabi District Municipality (DC20)
Free State	DEM5303	Mafube Local Municipality, Nketoana Local Municipality, Fezile Dabi District Municipality, Thabo Mofutsanyane District Municipality	Proposed redetermination of the municipal boundaries of Nketoana Local Municipality (FS193), Thabo Mofutsanyane District Municipality (DC19), Mafube Local Municipality (FS205) and Fezile Dabi District Municipality (DC20) by excluding the farm Verkykerskop 526 from the municipal area of Nketoana Local Municipality (FS193), Thabo Mofutsanyane District Municipality (DC19), and by including it into the municipal area of Mafube Local Municipality (FS205) and Fezile Dabi District Municipality (DC20).

PROVINCE	DEM NUMBER	AFFECTED MUNICIPALITIES	DESCRIPTION
Free State	DEM5304	Maluti a Phofung Local Municipality, Phumelela Local Municipality	Proposed redetermination of the municipal boundaries of the municipal boundaries of Phumelela Local Municipality (FS195) and Maluti a Phofung Local Municipality (FS194) by excluding a portion of the farm Some More 1277 from the municipal area of Phumelela Local Municipality (FS195) and by including it into the municipal area of Maluti a Phofung Local Municipality (FS194)
Free State	DEM5305	Mafube Local Municipality, Phumelela Local Municipality, Fezile Dabi District Municipality, Thabo Mofutsanyane District Municipality	Proposed redetermination of the municipal boundaries of Phumelela Local Municipality (FS195), Thabo Mofutsanyane District Municipality (DC19), Mafube Local Municipality (FS205) and Fezile Dabi District Municipality (DC20) by excluding a portion of the farm Baltimore 85 from the municipal areas of Mafube Local Municipality (FS205) and Fezile Dabi District Municipality (DC20) and by including it into the municipal areas of Phumelela Local Municipality (FS195) and

PROVINCE	DEM NUMBER	AFFECTED MUNICIPALITIES	DESCRIPTION
			Thabo Mofutsanyane District Municipality (DC19)
Free State	DEM5306	Kopanong Local Municipality, Letsemeng Local Municipality	Proposed redetermination of the municipal boundaries of Letsemeng Local Municipality (FS161) and Kopanong Local Municipality (FS162) by excluding a portion of farm Johansindie 1237 from the municipal area of Letsemeng Local Municipality (FS161) and by including it into the municipal area of Kopanong Local Municipality (FS162)
Free State	DEM5307	Tokologo Local Municipality, Tswelopele Local Municipality	Proposed redetermination of the municipal boundaries of Tokologo Local Municipality (FS182) and Tswelopele Local Municipality (FS183) by excluding farms Roodepan Vlake 245 and Rietfontein 327 from the municipal area of Tokologo Local Municipality (FS182) and by including them into the municipal area of Tswelopele Local Municipality (FS183).

PROVINCE	DEM NUMBER	AFFECTED MUNICIPALITIES	DESCRIPTION
Free State	DEM5308	Dihlabeng Local Municipality, Setsoto Local Municipality	Proposed redetermination of the municipal boundaries of Setsoto Local Municipality (FS191) and Dihlabeng Local Municipality (FS192) by excluding a portion of farm Mooigesig 428 from the municipal area of Setsoto Local Municipality (FS191) and by including it into the municipal area of Dihlabeng Local Municipality (FS192).
Free State	DEM5310	Phumelela Local Municipality, Mafube Local Municipality, Thabo Mofutsanyane District Municipality, Fezile Dabi District Municipality	Proposed redetermination of the municipal boundaries of Mafube Local Municipality (FS205), Fezile Dabi District Municipality (DC20), Phumelela Local Municipality (FS195) and Thabo Mofutsanyane District Municipality (DC19) by excluding portions of the farms Vaalkop 747, Juksky 470, Syferpoort 203, Maidstone 297 and Klipplaat 380 from the municipal areas of Mafube Local Municipality (FS205), Fezile Dabi District Municipality (DC20) and by including them into the municipal areas of Phumelela

PROVINCE	DEM NUMBER	AFFECTED MUNICIPALITIES	DESCRIPTION
			Local Municipality (FS195) and Thabo Mofutsanyane District Municipality (DC19).
Gauteng	DEM5400	Midvaal Local Municipality (GT422), Ekurhuleni Metropolitan Municipality, Sedibeng District Municipality (DC42)	Proposed redetermination of the municipal boundaries of Midvaal Local Municipality (GT422), Sedibeng District Municipality (DC42) and Ekurhuleni Metropolitan Municipality (EKU) by (1) excluding portions of farm Waterval 150 IR from Midvaal Local Municipality and include it into Ekurhuleni Metropolitan Municipality (EKU), (2) excluding other portions of Waterval 150 IR from Ekurhuleni Metropolitan Municipality (EKU) and including them into Midvaal Local Municipality (GT422), Sedibeng District Municipality (DC42). The municipal boundary will be aligned to the R550 and R59 roads.

PROVINCE	DEM NUMBER	AFFECTED MUNICIPALITIES	DESCRIPTION
Gauteng	DEM5402	Emfuleni Local Municipality (GT421), Merafong Local Municipality (GT484), Sedibeng District Municipality (DC42), West Rand District Municipality (DC48)	Proposed redetermination of the municipal boundaries of Emfuleni Local Municipality (GT421), Sedibeng District Municipality (DC42) and Merafong Local Municipality (GT484), West Rand District Municipality (DC48) by excluding a portion of farm Patriotsfontein 564 IQ from Merafong Local Municipality (GT421), Sedibeng District Municipality (DC42) and by including it into Emfuleni Local Municipality (GT421) and West Rand District Municipality (DC48), .
Gauteng	DEM5422	Emfuleni Local Municipality (GT421), City of Johannesburg Metropolitan Municipality, Sedibeng District Municipality (DC42)	Proposed redetermination of the municipal boundaries of Emfuleni Local Municipality (GT421), Sedibeng District Municipality (DC42) and City of Johannesburg Metropolitan Municipality (JHB) by excluding a portion of farm Poortjie 338 IQ from Emfuleni Local Municipality (GT421), Sedibeng District Municipality (DC42) and including it into City of

PROVINCE	DEM NUMBER	AFFECTED MUNICIPALITIES	DESCRIPTION
			Johannesburg Metropolitan Municipality (JHB).
Gauteng	DEM5430	City of Johannesburg Metropolitan Municipality, Mogale City Local Municipality, West Rand District Municipality (DC48)	Proposed redetermination of the municipal boundaries of Mogale City Local Municipality (GT481), West Rand District Municipality (DC48) and City of Johannesburg Metropolitan Municipality (JHB) by excluding the remaining portions of farm Rietfontein 189 IQ from City of Johannesburg Metropolitan Municipality and including it into Mogale City Local Municipality (GT481) and West Rand District Municipality (DC48)...
Gauteng	DEM5436	Emfuleni Local Municipality (GT421), Midvaal Local Municipality (GT422),	Proposed redeterminations of the municipal boundaries of Emfuleni Local Municipality (GT421) and Midvaal Local Municipality (GT422) by excluding the portion of Risiville from Emfuleni Local Municipality (GT421) and including it into Midvaal Local Municipality (GT422). The

PROVINCE	DEM NUMBER	AFFECTED MUNICIPALITIES	DESCRIPTION
			municipal boundary will be aligned to R42 road.
KwaZulu-Natal	DEM5601	Umdoni Local Municipality(KZN212), Umzumbe Local Municipality(KZN213)	Proposed redetermination of the municipal boundaries of Umzumbe Local Municipality (KZN213) and Umdoni Local Municipality (KZN212) by excluding a portion of farm BJ 16729 from the municipal area of Umzumbe Local Municipality (KZN213) and by including it into the municipal area of Umdoni Local Municipality (KZN212)
KwaZulu-Natal	DEM5603	Okhahlamba Local Municipality(KZN235), Alfred Duma Local Municipality(KZN238)	Proposed redetermination of the municipal boundaries of Alfred Duma Local Municipality (KZN238) and Okhahlamba Local Municipality (KZN235) by excluding a portion of farm Brakfontein 2208 from the municipal area of Alfred Duma Local Municipality (KZN238) and by including it into the municipal area of Okhahlamba Local Municipality (KZN235)

PROVINCE	DEM NUMBER	AFFECTED MUNICIPALITIES	DESCRIPTION
KwaZulu-Natal	DEM5604	Ndwedwe Local Municipality (KZN293), KwaDukuza Local Municipality (KZN292)	Proposed redetermination of the municipal boundaries of Ndwedwe Local Municipality (KZN293) and KwaDukuza Local Municipality (KZN292) by excluding a portion of portions 15 and 22 of farm Coleraine 17122 from the municipal area of Ndwedwe Local Municipality (KZN293) and by including them into the municipal area of KwaDukuza Local Municipality (KZN292)
KwaZulu-Natal	DEM5607	uMshwathi Local Municipality(KZN221), Mpofana Local Municipality(KZN223)	Proposed redetermination of the municipal boundaries of Mpofana Local Municipality (KZN223) and uMshwathi Local Municipality (KZN221) by excluding a portions of portion 5, 8 and 9 of farm Craigie Burn Estate 18026 from the municipal area of Mpofana Local Municipality (KZN223) and by including them into the municipal area of uMshwathi Local Municipality (KZN221)

PROVINCE	DEM NUMBER	AFFECTED MUNICIPALITIES	DESCRIPTION
KwaZulu-Natal	DEM5611	Ubuhlebezwe Local Municipality(KZN434), Dr Nkosazana Dlamini Zuma Local Municipality(KZN436)	Proposed redetermination of the municipal boundaries of Ubuhlebezwe Local Municipality (KZN434) and Dr Nkosazana Dlamini Zuma Local Municipality (KZN436) by excluding a portion of farm Lot AK 8622 and Lot S70 7197 from the municipal area of Ubuhlebezwe Local Municipality (KZN434) and by including them into the municipal area of Dr Nkosazana Dlamini Zuma Local Municipality (KZN436)
KwaZulu-Natal	DEM5615	Mpofana Local Municipality(KZN223), uMngeni Local Municipality(KZN222)	Proposed redetermination of the municipal boundaries of Mpofana Local Municipality (KZN223) and uMngeni Local Municipality (KZN222) by excluding portions of farm Fordoun 17585 and Farm 18377 from the municipal area of Mpofana Local Municipality (KZN223) and by including them into the municipal area of uMngeni Local Municipality (KZN222)
KwaZulu-Natal	DEM5622	Mandeni Local Municipality(KZN291),	Proposed redetermination of the municipal boundaries of Mandeni Local Municipality

PROVINCE	DEM NUMBER	AFFECTED MUNICIPALITIES	DESCRIPTION
		KwaDukuza Local Municipality(KZN292)	(KZN291) and KwaDukuza Local Municipality (KZN292) by excluding a portion of farm HU 17307 from the municipal area of KwaDukuza Local Municipality (KZN292) and by including it into the municipal area of Mandeni Local Municipality (KZN291)
KwaZulu-Natal	DEM5626	Greater Kokstad Local Municipality(KZN433), Umzimkhulu Local Municipality(KZN435)	Proposed redetermination of the municipal boundaries of Umzimkhulu Local Municipality (KZN435) and Greater Kokstad Local Municipality (KZN433) by excluding a portion of Kilrush 64 from the municipal area of Umzimkhulu Local Municipality (KZN435) and by including it into the municipal area of Greater Kokstad Local Municipality (KZN433)
KwaZulu-Natal	DEM5633	Mfolozi Local Municipality(KZN281), uMhlathuze Local Municipality(KZN282)	Proposed redetermination of the municipal boundaries of uMhlathuze Local Municipality (KZN282) and Mfolozi Local Municipality (KZN281) by excluding a portion of farm Lot 308 Empangeni 13742 from the municipal area uMhlathuze

PROVINCE	DEM NUMBER	AFFECTED MUNICIPALITIES	DESCRIPTION
			Local Municipality (KZN282) and by including it into the municipal area of Mfolozi Local Municipality (KZN281)
KwaZulu-Natal	DEM5635	KwaDukuza Local Municipality(KZN292), Mandeni Local Municipality(KZN291)	Proposed redetermination of the municipal boundaries of Mandeni Local Municipality (KZN291) and KwaDukuza Local Municipality (KZN292) by excluding portions of portion 4 and 5 of farm Margaret 16988 from the municipal area of KwaDukuza Local Municipality (KZN292) and by including them into the municipal area of Mandeni Local Municipality (KZN291).
KwaZulu-Natal	DEM5640	Mpofana Local Municipality(KZN223), Inkosi Langalibalele Local Municipality(KZN237), Umgungundlovu District Municipality(DC22), UThukela District Municipality(DC23)	Proposed redetermination of the municipal boundaries of Mpofana Local Municipality (KZN223), Umgungundlovu District Municipality (DC22), Inkosi Langalibalele Local Municipality (KZN237) and Uthukela District Municipality (DC23) by excluding a portion of farm Orihi Hill 16661 from the municipal areas of Mpofana Local Municipality (KZN223)

PROVINCE	DEM NUMBER	AFFECTED MUNICIPALITIES	DESCRIPTION
			and Umgungundlovu District Municipality (DC22) and by including it into the municipal areas of Inkosi Langalibalele Local Municipality (KZN237) and Uthukela District Municipality (DC23).
KwaZulu-Natal	DEM5647	Impendle Local Municipality(KZN224), Mpofana Local Municipality(KZN223)	Proposed redetermination of the municipal boundaries of Mpofana Local Municipality (KZN223) and Impendle Local Municipality (KZN224) by excluding a portion of farm Shelter No 2 9661 from the municipal area of Mpofana Local Municipality (KZN223) and by including it into the municipal area of Impendle Local Municipality (KZN224)
KwaZulu-Natal	DEM5649	uMngeni Local Municipality(KZN222), Impendle Local Municipality(KZN224)	Proposed redetermination of the municipal boundaries of Impendle Local Municipality (KZN224) and uMngeni Local Municipality (KZN222) by excluding a portion of farm Shelter No 1 9847 from the municipal area of Impendle Local Municipality (KZN224) and by including it into the municipal area of uMngeni Local Municipality (KZN222)

PROVINCE	DEM NUMBER	AFFECTED MUNICIPALITIES	DESCRIPTION
KwaZulu-Natal	DEM5657	Jozini Local Municipality(KZN272), Big Five Hlabisa Local Municipality(KZN276)	Proposed redetermination of the municipal boundaries of Jozini Local Municipality (KZN272) and Big Five Hlabisa Local Municipality (KZN276) by excluding portions of farms Versveld 16019, Bayete 17711 and Bronte 17383 from the municipal area of Jozini Local Municipality (KZN272) and by including them into the municipal area of Big Five Hlabisa Local Municipality (KZN276)
KwaZulu-Natal	DEM5658	Mthonjaneni Local Municipality(KZN285), Ulundi Local Municipality(KZN266), King Cetshwayo District Municipality(DC28), Zululand District Municipality(DC26)	Proposed redetermination of the municipal boundaries of Mthonjaneni Local Municipality (KZN285), King Cetshwayo District Municipality (DC28), Ulundi Local Municipality (KZN266) and Zululand District Municipality (DC26) by excluding portions of Toggekry 436 from the municipal areas of Mthonjaneni Local Municipality (KZN285) and Uthungulu District Municipality (DC28) and by

PROVINCE	DEM NUMBER	AFFECTED MUNICIPALITIES	DESCRIPTION
			including them into the municipal areas of Ulundi Local Municipality (KZN266) and Zululand District Municipality (DC26)
KwaZulu-Natal	DEM5660	Inkosi Langalibalele Local Municipality(KZN237), Mpofana Local Municipality(KZN233), Uthukela District Municipality(DC23), Umgungundlovu District Municipality(DC21)	Proposed redetermination of the municipal boundaries of Inkosi Langalibalele Local Municipality (KZN237), Uthukela District Municipality (DC23),Mpofana Local Municipality (KZN223) and Umgungundlovu District Municipality (DC22) by excluding portions of farm Wilheminas Rust 7424 from the municipal areas of Inkosi Langalibalele Local Municipality (KZN237) and Uthukela District Municipality (DC23) and by including them into the municipal areas of Mpofana Local Municipality (KZN223) and Umgungundlovu District Municipality (DC22)
KwaZulu-Natal	DEM5662	Abaqulusi Local Municipality(KZN263), Ulundi Local Municipality(KZN266)	Proposed redetermination of the municipal boundaries of Abaqulusi Local Municipality (KZN263) and Ulundi Local Municipality (KZN266) by

PROVINCE	DEM NUMBER	AFFECTED MUNICIPALITIES	DESCRIPTION
			excluding a portion of farm Kromdraai 735 from the municipal area of Abaqulusi Local Municipality (KZN263) and by including it into the municipal area of Ulundi Local Municipality (KZN266)
KwaZulu-Natal	DEM5663	Umdoni Local Municipality(KZN212), Umzumbe Local Municipality(KZN213)	Proposed redetermination of the municipal boundaries of Umdoni Local Municipality (KZN212) and Umzumbe Local Municipality (KZN213) by excluding a portion of farm Ngidi 17389 from the municipal area of Umdoni Local Municipality (KZN212) and by including it into the municipal area of Umzumbe Local Municipality (KZN213)
KwaZulu-Natal	DEM5665	Umdoni Local Municipality(KZN212), Umzumbe Local Municipality(KZN213)	Proposed redetermination of the municipal boundaries of Umdoni Local Municipality (KZN212) and Umzumbe Local Municipality (KZN213) by excluding portions of portion 9, 11 and 13 of farm Mgai 16801 from the municipal areas of Umdoni Local Municipality (KZN212) and by including it into the

PROVINCE	DEM NUMBER	AFFECTED MUNICIPALITIES	DESCRIPTION
			municipal areas of Umzumbe Local Municipality (KZN213)
KwaZulu-Natal	DEM5666	Umdoni Local Municipality(KZN212), Umzumbe Local Municipality(KZN213)	Proposed redetermination of the municipal boundaries of Umdoni Local Municipality (KZN212) and Umzumbe Local Municipality (KZN213) by excluding farms Engweni No 2 6798 from the municipal areas of Umdoni Local Municipality (KZN212) and by including them into the municipal areas of Umzumbe Local Municipality (KZN213)
KwaZulu-Natal	DEM5667	Umzumbe Local Municipality(KZN213), Ubuhlebezwe Local Municipality(KZN434), Ugu District Municipality(DC21), Harry Gwala District Municipality(DC43)	Proposed redetermination of the municipal boundaries of Umzumbe Local Municipality (KZN213), Ugu District Municipality (DC21), Ubuhlebezwe Local Municipality (KZN434) and Harry Gwala District Municipality (DC43) by excluding portions of farms Lot Cx 8025, Lot Ce 7374, Lot Cy 8134 and Allcliffe 15558 from the municipal areas of Umzumbe Local Municipality (KZN213) and Ugu District

PROVINCE	DEM NUMBER	AFFECTED MUNICIPALITIES	DESCRIPTION
			Municipality (DC21) and by including them into the municipal areas of Ubuhlebezwe Local Municipality (KZN434) and Harry Gwala District Municipality (DC43)
KwaZulu-Natal	DEM5670	uMngeni Local Municipality (KZN222), uMshwathi Local Municipality (KZN221)	Proposed redetermination of the municipal boundaries of uMngeni Local Municipality (KZN222) and uMshwathi Local Municipality (KZN221) by excluding farms Ezulwini 15380 and Farm 17142 from the municipal area of uMngeni Local Municipality (KZN222) and by including them into the municipal area of uMshwathi Local Municipality (KZN221)
KwaZulu-Natal	DEM5674	Mandeni Local Municipality (KZN291), KwaDukuza Local Municipality (KZN292)	Proposed redetermination of the municipal boundaries of Mandeni Local Municipality (KZN291) and Kwadukuza Local Municipality (KZN292) a by excluding portion of portion 2 of farm Prospect 17283 from the municipal area of Mandeni Local Municipality (KZN291) and by including it into the

PROVINCE	DEM NUMBER	AFFECTED MUNICIPALITIES	DESCRIPTION
			municipal areas of Kwadukuza Local Municipality (KZN292)
KwaZulu-Natal	DEM5675	Ndwedwe Local Municipality (KZN293), KwaDukuza Local Municipality (KZN292)	Proposed redetermination of the municipal boundaries of Ndwedwe Local Municipality (KZN293) and KwaDukuza Local Municipality (KZN292) by excluding farm Verbara 16585 and portion 11 and 12 of Reit Vallei 1128 from the municipal area of Ndwedwe Local Municipality (KZN293) and by including them into the municipal area of KwaDukuza Local Municipality (KZN292)
KwaZulu-Natal	DEM5676	Ndwedwe Local Municipality (KZN293), KwaDukuza Local Municipality (KZN292)	Proposed redetermination of the municipal boundaries of Ndwedwe Local Municipality (KZN293) and KwaDukuza Local Municipality (KZN292) and by excluding farm Weltevreden 1409 and portion 1,2,3,4,8,9, 10,11 and 12 of farm Tiffany 17200 from the municipal area of Ndwedwe Local Municipality (KZN293) and by including them into the municipal areas

PROVINCE	DEM NUMBER	AFFECTED MUNICIPALITIES	DESCRIPTION
			of KwaDukuza Local Municipality (KZN292)
KwaZulu-Natal	DEM5677	Ndwedwe Local Municipality (KZN293), KwaDukuza Local Municipality (KZN292)	Proposed redetermination of the municipal boundaries of Ndwedwe Local Municipality (KZN293) and KwaDukuza Local Municipality (KZN292) by excluding portions 6,9,10,11, 15,14, 20,25,72,91,92,107,134,135, 138,139 and 140 of farm SpioenKop 1125 from the municipal area of Ndwedwe Local Municipality (KZN293) and by including them into the municipal area of KwaDukuza Local Municipality (KZN292)
KwaZulu-Natal	DEM5679	uMzimkhulu Local Municipality (KZN435), Harry Gwala District Municipality (DC43), uMuziwabantu Local Municipality (KZN214), Ugu District Municipality	Proposed redetermination of the municipal boundaries of uMzimkhulu Local Municipality (KZN435), Harry Gwala District Municipality (DC43), uMuziwabantu Local Municipality (KZN214) and Ugu District Municipality (DC21) by excluding portions of farm Standford 4550 from the municipal areas of

PROVINCE	DEM NUMBER	AFFECTED MUNICIPALITIES	DESCRIPTION
			uMzimkhulu Local Municipality (KZN435), Harry Gwala District Municipality (DC43) and by including them into the municipal areas of uMuziwabantu Local Municipality (KZN214) and Ugu District Municipality (DC21)
KwaZulu-Natal	DEM5680	uMzimkhulu Local Municipality (KZN435), Harry Gwala District Municipality (DC43), uMuziwabantu Local Municipality (KZN214), Ugu District Municipality (DC21)	Proposed redetermination of the municipal boundaries of uMzimkhulu Local Municipality (KZN435), Harry Gwala District Municipality (DC43), uMuziwabantu Local Municipality (KZN214) and Ugu District Municipality (DC21) by excluding portions of farm Hluku 18278 and Deepdale Grande 18280 from the municipal areas of uMuziwabantu Local Municipality (KZN214) and Ugu District Municipality (DC21) and by including them into the municipal areas of uMzimkhulu Local Municipality (KZN435) and Harry Gwala District Municipality (DC43)

PROVINCE	DEM NUMBER	AFFECTED MUNICIPALITIES	DESCRIPTION
Limpopo	DEM5704	Lephalale Local Municipality, Modimolle-Mookgophong Local Municipality	Proposed redetermination of the municipal boundaries of Lephalale Local Municipality (LIM362) and Modimolle - Mookgophong Local Municipality (LIM368) by excluding a portion of the farm Sterkspruit 253 from the municipal area of Lephalale Local Municipality (LIM362) and by including it into the municipal area of Modimolle - Mookgophong Local Municipality (LIM368).
Limpopo	DEM5720	Greater Letaba Local Municipality, Greater Giyani Local Municipality	Proposed redetermination of the municipal boundaries of Greater Giyani Local Municipality (LIM331) and Greater Letaba Local Municipality (LIM332) by excluding a portion of Mamatlepa village on a portion of farm Sterkfontein 203 and by including it into the municipal area of Greater Letaba Local Municipality. The proposed boundary must be aligned to the Molototsi river.

PROVINCE	DEM NUMBER	AFFECTED MUNICIPALITIES	DESCRIPTION
Limpopo	DEM5734	Ba-Phalaborwa Local Municipality, Greater Tzaneen Local Municipality	Proposed redetermination of the municipal boundaries of Greater Tzaneen Local Municipality (LIM333) and Ba-Phalaborwa Local Municipality (LIM334) by excluding a portion of farm Kapiri Ranch 883 from the municipal area of Greater Tzaneen Local Municipality (LIM333) and by including it into the municipal area of Ba-Phalaborwa Local Municipality (LIM334).
Limpopo	DEM5739	Lephalale Local Municipality, Modimolle - Mookgophong Local Municipality	Proposed redetermination of the municipal boundaries of Lephalale Local Municipality (LIM362) and Modimolle - Mookgophong Local Municipality (LIM368) by excluding a portion of the farm Waterval 709 and portion of farm Olievenhouthoek 90 from the municipal area of Lephalale Local Municipality (LIM362) and by including them into the municipal area of Modimolle - Mookgophong Local Municipality (LIM368).

PROVINCE	DEM NUMBER	AFFECTED MUNICIPALITIES	DESCRIPTION
Limpopo	DEM5760	Modimolle Mookgophong Local Municipality, Thabazimbi Local Municipality	Proposed redetermination of the municipal boundaries of Thabazimbi Local Municipality (LIM361) and Modimolle - Mookgophong Local Municipality (LIM368) by excluding a portion of the farm Badenoch 454 from municipal area of Thabazimbi Local Municipality (LIM361) and including by it into the municipal area of Modimolle - Mookgophong Local Municipality (LIM368).
Mpumalanga	DEM5800	City of Mbombela Local Municipality (MP326), Nkomazi Local Municipality (MP324)	Proposed redetermination of the municipal boundaries of City of Mbombela Local Municipality (MP326) and Nkomazi Local Municipality (MP324), by excluding portions 5 and 9 of the farm Louws Creek 271 (Mashanyane Community) from the municipal area of Nkomazi Local Municipality (MP324), and by including them into the municipal area of City of Mbombela Local Municipality (MP326).

PROVINCE	DEM NUMBER	AFFECTED MUNICIPALITIES	DESCRIPTION
Mpumalanga	DEM5806	Msukaligwa Local Municipality (MP302), Chief Albert Luthuli Local Municipality (MP301)	Proposed redetermination of the municipal boundaries of Msukaligwa Local Municipality (MP302) and Chief Albert Luthuli Local Municipality (MP301), by excluding a portion of portion 2 (following the timber forestry establishment boundary) of the farm Vlakfontein 69 (Moloz Community) from the municipal area of Chief Albert Luthuli Local Municipality (MP301) and by including them into the municipal area of Msukaligwa Local Municipality (MP302).
Mpumalanga	DEM5813	Msukaligwa Local Municipality (MP302), Mkhondo Local Municipality (MP303)	Proposed redetermination of the municipal boundaries of Msukaligwa Local Municipality (MP302) and Mkhondo Local Municipality (MP303), by excluding portion 10 of the farm Glen Eland 413 (Matayiteleni Community) from the municipal area of Msukaligwa Local Municipality (MP302) and by including it into the

PROVINCE	DEM NUMBER	AFFECTED MUNICIPALITIES	DESCRIPTION
			municipal area of Mkhondo Local Municipality (MP303).
Mpumalanga	DEM5820	Lekwa Local Municipality (MP305), Dipaleseng Local Municipality (MP306)	Proposed redetermination of the municipal boundaries of Lekwa Local Municipality (MP305) and Dipaleseng Local Municipality (MP306), by excluding the farms Vellingskraal 657 and Die Draai 659 from the municipal area of Dipaleseng Local Municipality (MP306), and by including them into the municipal area of Lekwa Local Municipality (MP305).
Mpumalanga	DEM5821	City of Mbombela Local Municipality (MP326), Thaba Chweu Local Municipality (MP321)	Proposed redetermination of the municipal boundaries of City of Mbombela Local Municipality (MP326) and Thaba Chweu Local Municipality (MP321), by excluding portions 2, 11, 13, 36, 46, 47 and 49 of the farm Roodewal 251 (Eden Community boundary to follow R37 and Alkmar gravel road), from the municipal area of Chweu Local Municipality (MP321), and by

PROVINCE	DEM NUMBER	AFFECTED MUNICIPALITIES	DESCRIPTION
			including them into the municipal area of City of Mbombela Local Municipality (MP326).
North West	DEM6001	Naledi Local Municipality, Greater Taung Local Municipality	Proposed redetermination of the municipal boundaries of Naledi Local Municipality (NW392) and Greater Taung Local Municipality (NW394), by excluding portions of farms Biesiesdal 799, Salpetre Pan 800, Dorst 754, Paddafontein 753 and Lime Rick 755 from municipal area of Greater Taung Local Municipality (NW394) and including it into the municipal area of Naledi Local Municipality (NW392)
North West	DEM6002	Tswaing Local Municipality, Ditsobotla Local Municipality,	Proposed redetermination of the municipal boundaries of Tswaing Local Municipality (NW382) and Ditsobotla Local Municipality (NW384), by excluding a portion of farm Bloedzuigerspan 91 from the municipal area of Tswaing Local Municipality (NW382) and including it into the municipal area of Ditsobotla Local Municipality (NW384)

PROVINCE	DEM NUMBER	AFFECTED MUNICIPALITIES	DESCRIPTION
			and by excluding a portion of farm Kaalpan 82 from the municipal area of Ditsobotla Local Municipality (NW384) and including it into the municipal area of Tswaing Local Municipality (NW382)
North West	DEM6003	Mamusa Local Municipality, Tswaing Local Municipality, Dr Ruth Segomotsi Mompoti District Municipality, Ngaka Modiri Molema District Municipality	Proposed redetermination of the municipal boundaries of Tswaing Local Municipality (NW382) and Mamusa Local Municipality (NW393), by excluding a portion of farm Broodericks Vally 386 from the municipal area of Mamusa Local Municipality (NW382), Ngaka Modiri Molema District Municipality (DC38) and including it into the municipal area of Tswaing Local Municipality (NW384), Dr Ruth Segomotsi Mompoti DC39.
North West	DEM6011	Ditsobotla Local Municipality, City of Matlosana Local Municipality, Ngaka Modiri Molema District Municipality, Dr Kenneth Kaunda District Municipality	Proposed redetermination of the municipal boundaries of Ditsobotla Local Municipality (NW384) and City of Matlosana Local Municipality (NW403), by excluding a portion of farm LEKKERLACK 114 and

PROVINCE	DEM NUMBER	AFFECTED MUNICIPALITIES	DESCRIPTION
			RIETFontein 115 from the municipal area of City Matlosana Local Municipality (NW403), Dr Kenneth Kaunda District Municipality (DC40) and including it into the municipal area of Ditsobotla Local Municipality, Ngaka Modiri Molema District Municipality (DC38).
North West	DEM6014	Ditsobotla Local Municipality, Ramotshere Moiloa Local Municipality	Proposed redetermination of the municipal boundaries of Ditsobotla Local Municipality (NW384) and Ramotshere Moiloa Local Municipality (NW385), by excluding portions of farm Rietvallei 288 from municipal area of Ditsobotla Local Municipality (NW384) and including it into the municipal area of Ramotshere Moiloa Local Municipality (NW385)
North West	DEM6025	Kgetlengrivier Local Municipality, Ditsobotla Local Municipality, Bojanala District Municipality, Ngaka Modiri Molema District Municipality	Proposed redetermination of the municipal boundaries of Kgetlengrivier Local Municipality (NW374), Bojanala District Municipality, and Ditsobotla Local Municipality (NW384) by excluding a portion

PROVINCE	DEM NUMBER	AFFECTED MUNICIPALITIES	DESCRIPTION
			Stinkhoutboom 468 from the municipal area of Ditsobotla Local Municipality (NW384), Ngaka Modiri Molema District Municipality (DC38) and including it into the municipal area of Kgetlengriver) (NW374), Bojanala District Municipality (DC37).
North West	DEM6026	Tswaing Local Municipality, City of Matlosana Local Municipality, Ngaka Modiri Molema District Municipality, Dr Kenneth Kaunda District Municipality	Proposed redetermination of the municipal boundaries of Tswaing Local Municipality (NW382) and City of Matlosana Local Municipality (NW403), by excluding a portion of farm Droogekraal 543 from the municipal area of Tswaing Local Municipality (NW382), Ngaka Modiri District Municipality DC38 and including it into the municipal area of City of Matlosa Local Municipality (NW384), Kenneth Kaunda District Municipality DC40.
North West	DEM6027	Ditsobotla Local Municipality, Ramotshere Moiloa Local Municipality	Proposed redetermination of the municipal boundaries of Ditsobotla Local Municipality (NW384) and Ramotshere Moiloa Local Municipality (NW385), by excluding a

PROVINCE	DEM NUMBER	AFFECTED MUNICIPALITIES	DESCRIPTION
			portion of Saamgevoeg 292 from the municipal area of Ditsobotla Local Municipality and including it into the municipal area of Ramotshere Local Municipality (NW384).
North West	DEM6028	Mamusa Local Municipality, Naledi Local Municipality	Proposed redetermination of the municipal boundaries of Mamusa Local Municipality (NW393) and Naledi Local Municipality (NW392), by excluding a portion of Halletshoop 15 from the municipal area of Mamusa Local Municipality and including it into the municipal area of Naledi Local Municipality (NW392).
Northern Cape	DEM5900	Kai! Garib Local Municipality, Dawid Kruiper Local Municipality.	Proposed redetermination of the municipal boundaries of Dawid Kruiper Local Municipality (NC087) and !Kai Garip Local Municipality (NC082) by excluding a portion of farm Bloemfontein from the municipal area of !Kai Garip Local Municipality (NC082) and by including it into the municipal area of

PROVINCE	DEM NUMBER	AFFECTED MUNICIPALITIES	DESCRIPTION
			Dawid Kruiper Local Municipality (NC087)
Northern Cape	DEM5902	Kai !Garib Local Municipality, !Kheis Local Municipality	Proposed redetermination of the municipal boundaries of !Kheis Local Municipality (NC084) and Kai !Garib Local Municipality (NC082) by excluding a portion of Liefdood 181 from the municipal area of !Kheis Local Municipality (NC084) and by including it into the municipal area of Kai Garib Local Municipality (NC082)
Northern Cape	DEM5903	Dikgatlong Local Municipality, Sol Plaatje Local Municipality.	Proposed redetermination of the municipal boundaries of Dikgatlong Local Municipality (NC092) and Sol Plaatje Local Municipality (NC091) by excluding a portion of farm Drooge Veldt 292 from the municipal area of Dikgatlong Local Municipality (NC092) and by including it into the municipal area of Sol Plaatje Local Municipality (NC091)
Northern Cape	DEM5906	Hantam Local Municipality, Hoogland Local Municipality.	Proposed redetermination of the municipal boundaries of Hantam Local Municipality (NC065) and Karoo

PROVINCE	DEM NUMBER	AFFECTED MUNICIPALITIES	DESCRIPTION
			Hoogland Local Municipality (NC066) by excluding a portion of portion 1 farm Middel Hoek 298 from the municipal area of Hantam Local Municipality (NC065) and by including it into the municipal area of Karoo Hoogland Local Municipality (NC066).
Northern Cape	DEM5908	Siyancuma Local Municipality, Tsantsabane Local Municipality, Pixley ka Seme District Municipality F Mgcawu District Municipality	Proposed redetermination of the municipal boundaries of Siyancuma Local Municipality (NC078) and Tsantsabane Local Municipality (NC085) by excluding a portion of Plaas 222 and Baken Kop 69 from the municipal area of Tsantsabane Local Municipality (NC085), Pixley ka Seme District Municipality (DC08) and by including it into the municipal area of Siyancuma Local Municipality (NC078), Z F Mgcawu District Municipality (DC07).

PROVINCE	DEM NUMBER	AFFECTED MUNICIPALITIES	DESCRIPTION
Northern Cape	DEM5909	Siyancuma Local Municipality, Sol Plaatje Local Municipality, Pixley ka Seme District Municipality, Frances Baard District Municipality	Proposed redetermination of municipal boundaries of Siyancuma Local Municipality (NC078), Pixley ka Seme District Municipality (DC07), Sol Plaatje Local Municipality (NC091), Frances Baard District Municipality (DC09) by excluding portions of farms Zand Plaats 105, Middel Plaats North 103, Uitkyk 106, Lock's Verdriet 105 and Paardeberg East 153 from the municipal area of Siyancuma Local Municipality (NC078), Pixley ka Seme District Municipality (DC07) and including them into the municipal area of Sol Plaatje Local Municipality (NC091), Frances Baard District Municipality (DC09) and by excluding portions of farms Paardeberg 154 and Middel Plaats South 104 from the municipal area of Sol Plaatje Local Municipality (NC091), Frances Baard District Municipality (DC09) and including them into the municipal area of Siyancuma

PROVINCE	DEM NUMBER	AFFECTED MUNICIPALITIES	DESCRIPTION
			Local Municipality (NC078), Pixley ka Seme District Municipality (DC07).
Northern Cape	DEM5910	!Kheis Local Municipality, Siyathemba Local Municipality, Z F Mgcawu District Municipality, Pixley ka Seme District Municipality	Proposed redetermination of the municipal boundaries of !Kheis Local Municipality (NC084) and Siyathemba Local Municipality (NC078) by excluding a portion of Farm 1 from the municipal area of Siyathemba Local Municipality (NC078), Pixley ka Seme District Municipality (DC07) and by including it into the municipal area of !Kheis Local Municipality (NC084), Z F Mgcawu District Municipality (DC08).
Western Cape	DEM6300	Theewaterskloof Local Municipality, Cape Agulhas Local Municipality	1. Proposed redetermination of the municipal boundaries of Theewaterskloof Local Municipality (WC031) and Cape Agulhas Local Municipality (WC033) by excluding a portion of the

PROVINCE	DEM NUMBER	AFFECTED MUNICIPALITIES	DESCRIPTION
			<p>farm Brakfontein 991 from the municipal area of Cape Agulhas Local Municipality (WC033), and by including it into the municipal area of Theewaterskloof Local Municipality (WC031).</p> <p>2 .Proposed redetermination of the municipal boundaries of Theewaterskloof Local Municipality (WC031) and Cape Agulhas Local Municipality (WC033) by excluding a portion of farm Karne Melk Rivier 614 from the municipal area of Theewaterskloof Local Municipality (WC031) and include it into the municipal area of Cape Agulhas Local Municipality (WC033).</p>
Western Cape	DEM6303	Swartland Local Municipality, Drakenstein Local Municipality, West Coast District Municipality, Cape Drakenstein Local Municipality (WC023), Cape Winelands District Municipality	Proposed redetermination of municipal boundaries of Swartland Local Municipality (WC015), West Coast District Municipality (DC01), Drakenstein Local Municipality (WC023), Cape Winelands District Municipality (DC02) by

PROVINCE	DEM NUMBER	AFFECTED MUNICIPALITIES	DESCRIPTION
			excluding portion of the farm Boter Kloof 851 from the municipal area of Drakenstein Local Municipality (WC023), Cape Winelands District Municipality (DC02) and including it into the municipal area of Swartland Local Municipality (WC015), West Coast District Municipality (DC01).
Western Cape	DEM6306	Drakenstein Local Municipality, City of Cape Town Metropolitan Municipality, Cape Winelands District Municipality	Proposed redetermination of municipal boundaries of City of Cape Town Metropolitan Municipality (CPT), Drakenstein Local Municipality (WC023), Cape Winelands District Municipality (DC02) by excluding portion of the farm Leeukuil 936 from the municipal area of Drakenstein Local Municipality (WC023), Cape Winelands District Municipality (DC02) and including it into the municipal area of City of Cape Town Metropolitan Municipality (CPT).

PROVINCE	DEM NUMBER	AFFECTED MUNICIPALITIES	DESCRIPTION
Western Cape	DEM6309	City of Cape Town Metropolitan Municipality, Stellenbosch Local Municipality, Cape Winelands District Municipality	Proposed redetermination of municipal boundaries of Stellenbosch Local Municipality (WC024), Cape Winelands District Municipality (DC02), and City of Cape Town Metropolitan Municipality (CPT) by excluding a portion of farm Bank Jonker 155 from the municipal area of City of Cape Town Metropolitan Municipality (CPT) and including it into the municipal area of Stellenbosch Local Municipality (WC024), Cape Winelands District Municipality (DC02).
Western Cape	DEM6316	City of Cape Town Metropolitan Municipality, Swartland Local Municipality, West Coast District Municipality	Proposed redetermination of the municipal boundaries of City of Cape Town Metropolitan Municipality (CPT), Swartland Local Municipality (WC015), West Coast District Municipality (DC01), by excluding a portion of the farm 565 from the municipal area of Swartland Local Municipality (WC015) and West Coast District Municipality (DC01)

PROVINCE	DEM NUMBER	AFFECTED MUNICIPALITIES	DESCRIPTION
			and including it into the municipal area of City of Cape Town Metropolitan Municipality (CPT).
Western Cape	DEM6317	City of Cape Town Metropolitan Municipality, Swartland Local Municipality, West Coast District Municipality	Proposed redetermination of the municipal boundaries of City of Cape Town Metropolitan Municipality (CPT), Swartland Local Municipality (WC015), West Coast District Municipality (DC01), by excluding a portion of the farm Modderfontein 27 from the municipal area of Swartland Local Municipality (WC015) and West Coast District Municipality (DC01) and including it into the municipal area of City of Cape Town Metropolitan Municipality (CPT).
Western Cape	DEM6318	City of Cape Town Metropolitan Municipality, Swartland Local Municipality, West Coast District Municipality	Proposed redetermination of the municipal boundaries of City of Cape Town Metropolitan Municipality (CPT), Swartland Local Municipality (WC015), West Coast District Municipality (DC01), by excluding a portion of the farm

PROVINCE	DEM NUMBER	AFFECTED MUNICIPALITIES	DESCRIPTION
			Mosselbank 906 from the municipal area of Swartland Local Municipality (WC015), West Coast District Municipality (DC01) and including it into the municipal area of City of Cape Town Metropolitan Municipality (CPT).
Western Cape	DEM6319	City of Cape Town Metropolitan Municipality, Swartland Local Municipality, West Coast District Municipality	Proposed redetermination of the municipal boundaries of City of Cape Town Metropolitan Municipality (CPT), Swartland Local Municipality (WC015), West Coast District Municipality (DC01), by excluding portion 10 of the farm Munniks Dam 908 from the municipal area of Swartland Local Municipality (WC015), West Coast District Municipality (DC01) and including it into the municipal area of the City of Cape Town Metropolitan Municipality (CPT).
Western Cape	DEM6320	City of Cape Town Metropolitan Municipality, Swartland Local Municipality, West Coast District Municipality	Proposed redetermination of the municipal boundaries of City of Cape Town Metropolitan Municipality (CPT), Swartland Local

PROVINCE	DEM NUMBER	AFFECTED MUNICIPALITIES	DESCRIPTION
		Coast District Municipality	Municipality (WC015), West Coast District Municipality (DC01), by excluding a portion of the farm 1092 from the municipal area of City of Cape Town Metropolitan Municipality (CPT), and by including it into the municipal areas of Swartland Local Municipality (WC015), West Coast District Municipality (DC01).
Western Cape	DEM6321	City of Cape Town Metropolitan Municipality, Drakenstein Local Municipality, Cape Winelands District Municipality	Proposed redetermination of municipal boundaries of the City of Cape Town Metropolitan Municipality (CPT), Drakenstein Local Municipality (WC023), Cape Winelands District Municipality (DC02) by excluding a portion of the farm Boerfontein 919 from the municipal area of Drakenstein Local Municipality (WC023), Cape Winelands District Municipality (DC02) and include it in the municipal area of the City of Cape Town Metropolitan Municipality (CPT).

PROVINCE	DEM NUMBER	AFFECTED MUNICIPALITIES	DESCRIPTION
Western Cape	DEM6322	City of Cape Town Metropolitan Municipality, Drakenstein Local Municipality, Cape Winelands District Municipality	<p>1. Proposed redetermination of municipal boundaries of the City of Cape Town Metropolitan Municipality (CPT), Drakenstein Local Municipality (WC023), Cape Winelands District Municipality (DC02) by excluding a portion of farm Romance 1370, a portion of farm 1369, a portion of farm Matjeskuil 733 from the municipal area of Drakenstein Local Municipality (WC023), Cape Winelands District Municipality (DC02) and include them into the municipal area of the City of Cape Town Metropolitan Municipality (CPT).</p> <p>2. Proposed redetermination of municipal boundaries of the City of Cape Town Metropolitan Municipality (CPT), Drakenstein Local Municipality (WC023), Cape Winelands District Municipality (DC02) by excluding a portion of farm</p>

PROVINCE	DEM NUMBER	AFFECTED MUNICIPALITIES	DESCRIPTION
			Joostenbergs Vlake 727 and a portion of farm Joostenbergs Vlake 728 from the municipal area of the City of Cape Town Metropolitan Municipality (CPT) and including them into the municipal area of Drakenstein Local Municipality (WC023), Cape Winelands District Municipality (DC02).
Western Cape	DEM6323	City of Cape Town Metropolitan Municipality, Drakenstein Local Municipality, Cape Winelands District Municipality	Proposed redetermination of municipal boundaries of the City of Cape Town Metropolitan Municipality (CPT), Drakenstein Local Municipality (WC023), Cape Winelands District Municipality (DC02) by excluding portion 1 of the farm Schinderkuil 444 from the municipal area of Drakenstein Local Municipality (WC023), Cape Winelands District Municipality (DC02) and include it in the municipal area of the City of Cape Town Metropolitan Municipality (CPT).

PROVINCE	DEM NUMBER	AFFECTED MUNICIPALITIES	DESCRIPTION
Western Cape	DEM6324	City of Cape Town Metropolitan Municipality, Stellenbosch Local Municipality, Cape Winelands District Municipality	Proposed redetermination of municipal boundaries of Stellenbosch Local Municipality (WC024), Cape Winelands District Municipality (DC02), City of Cape Town Metropolitan Municipality (CPT) by excluding a portion of farm 1386 and a portion of farm 1565 from the municipal area of the City of Cape Town Metropolitan Municipality (CPT) and including them into the municipal area of Stellenbosch Local Municipality (WC024), Cape Winelands District Municipality (DC02) and excluding a portion of the farm Fairview 245 from the municipal area of Stellenbosch Local Municipality (WC024), Cape Winelands District Municipality (DC02) and including it into the municipal area of the City of Cape Town Metropolitan Municipality (CPT).

PROVINCE	DEM NUMBER	AFFECTED MUNICIPALITIES	DESCRIPTION
Western Cape	DEM6325	City of Cape Town Metropolitan Municipality, Stellenbosch Local Municipality, Cape Winelands District Municipality	Proposed redetermination of municipal boundaries of Stellenbosch Local Municipality (WC024), Cape Winelands District Municipality (DC02), City of Cape Town Metropolitan Municipality (CPT) by excluding a portion of farm 1386 and a portion of farm 1565 from the municipal area of the City of Cape Town Metropolitan Municipality (CPT) and including them into the municipal area of Stellenbosch Local Municipality (WC024), Cape Winelands District Municipality (DC02) and excluding a portion of the farm Fairview 245 from the municipal area of Stellenbosch Local Municipality (WC024), Cape Winelands District Municipality (DC02) and including it into the municipal area of the City of Cape Town Metropolitan Municipality (CPT)

PROVINCE	DEM NUMBER	AFFECTED MUNICIPALITIES	DESCRIPTION
Western Cape	DEM6329	City of Cape Town Metropolitan Municipality, Stellenbosch Local Municipality, Cape Winelands District Municipality	Proposed redetermination of municipal boundaries of Stellenbosch Local Municipality (WC024), Cape Winelands District Municipality (DC02), City of Cape Town Metropolitan Municipality (CPT) by excluding a portion of the remainder of Eerste Rivier Town Allotment from the municipal area of Stellenbosch Local Municipality (WC024), Cape Winelands District Municipality (DC02) and including it into the municipal area of City of Cape Town Metropolitan Municipality (CPT).
Western Cape	DEM6331	City of Cape Town Metropolitan Municipality, Stellenbosch Local Municipality, Cape Winelands District Municipality	Proposed redetermination of municipal boundaries of Stellenbosch Local Municipality (WC024), Cape Winelands District Municipality (DC02), and City of Cape Town Metropolitan Municipality (CPT) by aligning the municipal boundary of City of Cape Town Metropolitan

PROVINCE	DEM NUMBER	AFFECTED MUNICIPALITIES	DESCRIPTION
			Municipality (CPT) and Stellenbosch Local Municipality (WC024), Cape Winelands District Municipality (DC02) to the southern boundary of Erf 222 of Raithby of Stellenbosch Allotment area.
Western Cape	DEM6333	City of Cape Town Metropolitan Municipality, Stellenbosch Local Municipality, Cape Winelands District Municipality	Proposed redetermination of municipal boundaries of Stellenbosch Local Municipality (WC024), Cape Winelands District Municipality (DC02), City of Cape Town Metropolitan Municipality (CPT) by excluding a portion of farm Koopmanskloof Noord 216 from the municipal area of the City of Cape Town Metropolitan Municipality (CPT) and including it into the municipal area of Stellenbosch Local Municipality (WC024), Cape Winelands District Municipality (DC02) and excluding a portion of the farm Koopmans Kloof 221 from the municipal area of Stellenbosch Local

PROVINCE	DEM NUMBER	AFFECTED MUNICIPALITIES	DESCRIPTION
			Municipality (WC024), Cape Winelands District Municipality (DC02) and including it into the municipal area of the City of Cape Town Metropolitan Municipality (CPT).
Western Cape	DEM6334	City of Cape Town Metropolitan Municipality, Stellenbosch Local Municipality, Cape Winelands District Municipality	Proposed redetermination of municipal boundaries of Stellenbosch Local Municipality (WC024), Cape Winelands District Municipality (DC02), City of Cape Town Metropolitan Municipality (CPT) by excluding a portion of the farm Koopmans Kloof 221 from the municipal area of Stellenbosch Local Municipality (WC024), Cape Winelands District Municipality (DC02) and including it into the municipal area of the City of Cape Town Metropolitan Municipality (CPT).
Western Cape	DEM6335	City of Cape Town Metropolitan Municipality, Stellenbosch Local	Proposed redetermination of municipal boundaries of Stellenbosch Local Municipality (WC024), Cape

PROVINCE	DEM NUMBER	AFFECTED MUNICIPALITIES	DESCRIPTION
		Municipality, Cape Winelands District Municipality	Winelands District Municipality (DC02), City of Cape Town Metropolitan Municipality (CPT) by excluding a portion of Portion 29 of the farm Klein Bottelary 17 from the municipal area of the City of Cape Town Metropolitan Municipality (CPT) and including it into the municipal area of Stellenbosch Local Municipality (WC024), Cape Winelands District Municipality (DC02).
Western Cape	DEM6336	City of Cape Town Metropolitan Municipality, Stellenbosch Local Municipality, Cape Winelands District Municipality	Proposed redetermination of municipal boundaries of Stellenbosch Local Municipality (WC024), Cape Winelands District Municipality (DC02), City of Cape Town Metropolitan Municipality (CPT) by excluding a portion of the farm Klein Bottelary 17 from the municipal area of Stellenbosch Local Municipality (WC024), Cape Winelands District Municipality (DC02) and including it into the municipal

PROVINCE	DEM NUMBER	AFFECTED MUNICIPALITIES	DESCRIPTION
			area of the City of Cape Town Metropolitan Municipality (CPT).
Western Cape	DEM6337	City of Cape Town Metropolitan Municipality, Stellenbosch Local Municipality, Cape Winelands District Municipality	Proposed redetermination of municipal boundaries of Stellenbosch Local Municipality (WC024), Cape Winelands District Municipality (DC02), City of Cape Town Metropolitan Municipality (CPT) by excluding a portion of the Remainder of farm Haasendal 222 from the municipal area of the City of Cape Town Metropolitan Municipality (CPT) and including it into the municipal area of Stellenbosch Local Municipality (WC024), Cape Winelands District Municipality (DC02).
Western Cape	DEM6338	City of Cape Town Metropolitan Municipality, Stellenbosch Local Municipality, Cape Winelands District Municipality	Proposed redetermination of municipal boundaries of Stellenbosch Local Municipality (WC024), Cape Winelands District Municipality (DC02), City of Cape Town Metropolitan Municipality (CPT) by

PROVINCE	DEM NUMBER	AFFECTED MUNICIPALITIES	DESCRIPTION
			excluding portions 99, 106, 109 and 112 of the farm Haasendal 222 from the municipal area of Stellenbosch Local Municipality (WC024), Cape Winelands District Municipality (DC02) and including them into the municipal area of the City of Cape Town Metropolitan Municipality (CPT).
Western Cape	DEM6339	City of Cape Town Metropolitan Municipality, Stellenbosch Local Municipality, Cape Winelands District Municipality	Proposed redetermination of municipal boundaries of Stellenbosch Local Municipality (WC024), Cape Winelands District Municipality (DC02), City of Cape Town Metropolitan Municipality (CPT) by excluding a portion of farm Fairview 245 from the municipal area of Stellenbosch Local Municipality (WC024), Cape Winelands District Municipality (DC02) and including it into the municipal area of the City of Cape Town Metropolitan Municipality (CPT) and by excluding a

PROVINCE	DEM NUMBER	AFFECTED MUNICIPALITIES	DESCRIPTION
			portion of the farm 250 from the municipal area of the City of Cape Town Metropolitan Municipality (CPT) and including it into the municipal area of Stellenbosch Local Municipality (WC024), Cape Winelands District Municipality (DC02).
Western Cape	DEM6340	City of Cape Town Metropolitan Municipality, Stellenbosch Local Municipality, Cape Winelands District Municipality	Proposed redetermination of municipal boundaries of Stellenbosch Local Municipality (WC024), Cape Winelands District Municipality (DC02), and City of Cape Town Metropolitan Municipality (CPT) by excluding farm 1528 from the municipal area of Stellenbosch Local Municipality (WC024), Cape Winelands District Municipality (DC02) and including it into the municipal area of City of Cape Town Metropolitan Municipality (CPT).

PROVINCE	DEM NUMBER	AFFECTED MUNICIPALITIES	DESCRIPTION
Western Cape	DEM6341	City of Cape Town Metropolitan Municipality, Stellenbosch Local Municipality, Cape Winelands District Municipality	<p>1. Proposed redetermination of municipal boundaries of Stellenbosch Local Municipality (WC024), Cape Winelands District Municipality (DC02), City of Cape Town Metropolitan Municipality (CPT) by excluding a portion of farm Vredenburg 696 from the municipal area of Stellenbosch Local Municipality (WC024), Cape Winelands District Municipality (DC02) and including it into the municipal area of the City of Cape Town Metropolitan Municipality (CPT).</p> <p>2. Proposed redetermination of municipal boundaries of Stellenbosch Local Municipality (WC024), Cape Winelands District Municipality (DC02), City of Cape Town Metropolitan Municipality (CPT) by excluding a portion of the farm Vredenburg 692 from the municipal area of the City</p>

PROVINCE	DEM NUMBER	AFFECTED MUNICIPALITIES	DESCRIPTION
			of Cape Town Metropolitan Municipality (CPT) and including it into the municipal area of Stellenbosch Local Municipality (WC024), Cape Winelands District Municipality (DC02).
Western Cape	DEM6342	City of Cape Town Metropolitan Municipality, Stellenbosch Local Municipality, Cape Winelands District Municipality	Proposed redetermination of municipal boundaries of Stellenbosch Local Municipality (WC024), Cape Winelands District Municipality (DC02) and City of Cape Town Metropolitan Municipality (CPT) by excluding a portion of the farm 1531, the farm Driksberg 717 and the farm Drie Wagte 1325 from the municipal area of the City of Cape Town Metropolitan Municipality (CPT) and including them into the municipal area of Stellenbosch Local Municipality (WC024), Cape Winelands District Municipality (DC02).

PROVINCE	DEM NUMBER	AFFECTED MUNICIPALITIES	DESCRIPTION
Western Cape	DEM6343	City of Cape Town Metropolitan Municipality, Stellenbosch Local Municipality, Cape Winelands District Municipality	Proposed redetermination of municipal boundaries of Stellenbosch Local Municipality (WC024), Cape Winelands District Municipality (DC02) and City of Cape Town Metropolitan Municipality (CPT) by excluding a portion of farm Helfor 721 from the municipal area of Stellenbosch Local Municipality (WC024), Cape Winelands District Municipality (DC02) and including it into the municipal area of the City of Cape Town Metropolitan Municipality (CPT).
Western Cape	DEM6347	City of Cape Town Metropolitan Municipality, Theewaterskloof Local Municipality, Overberg District Municipality	Proposed redetermination of municipal boundaries of City of Cape Town Metropolitan Municipality (CPT), Theewaterskloof Local Municipality (WC031), and Overberg District Municipality (DC03) by excluding a portion of the farm Weltevreden 93 from the municipal area of the City of Cape Town Metropolitan Municipality (CPT) and including it into the

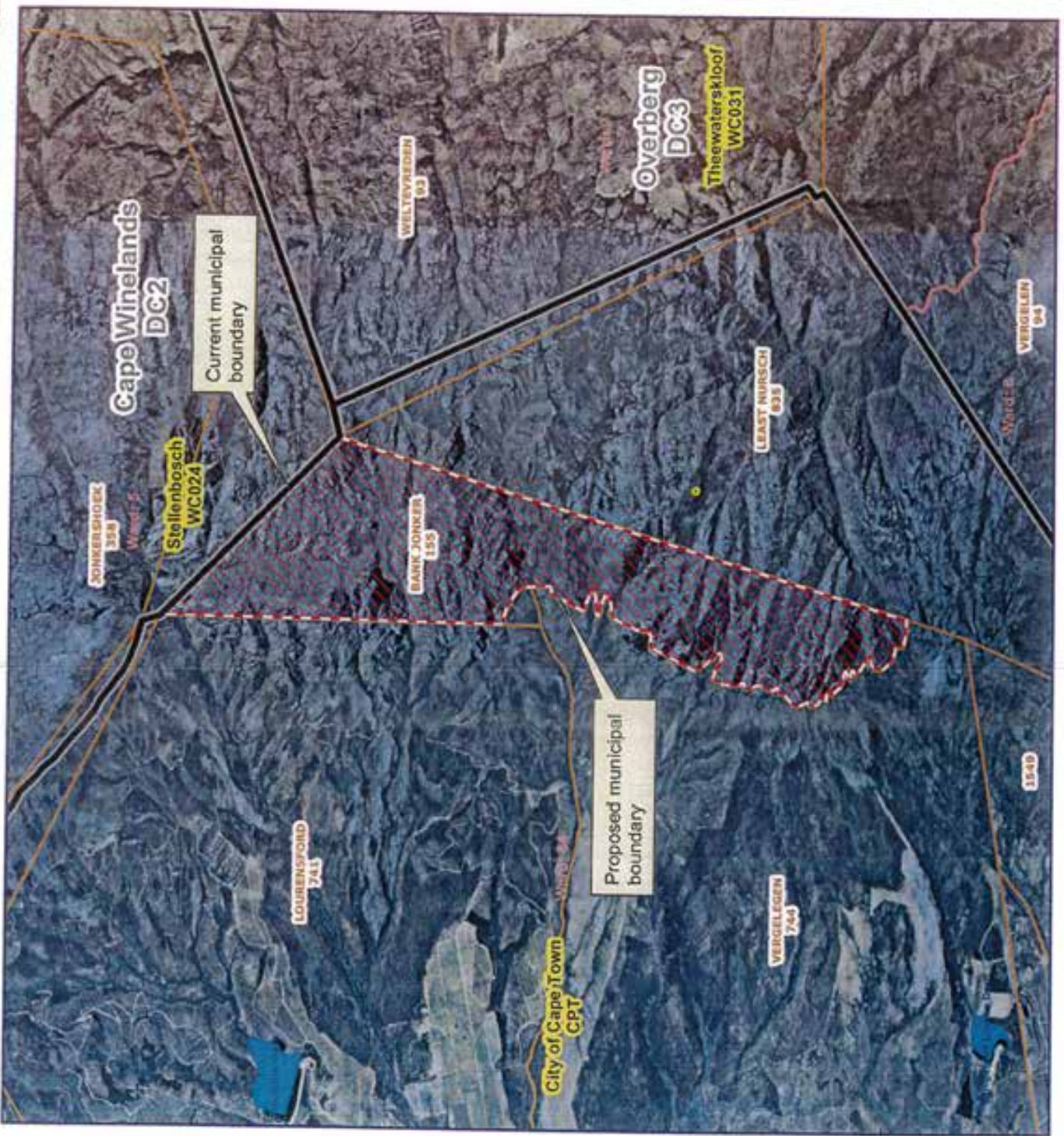
PROVINCE	DEM NUMBER	AFFECTED MUNICIPALITIES	DESCRIPTION
			municipal area of Theewaterskloof Local Municipality (WC031), Overberg District Municipality (DC03).
Western Cape	DEM6349	Theewaterskloof Local Municipality, Cape Agulhas Local Municipality, Overberg District Municipality	Proposed redetermination of municipal boundaries of Theewaterskloof Local Municipality (WC031), Cape Agulhas Local Municipality (WC033) by excluding a portion of the farm Bosch Rivier 609 and a portion of Farm 1003 from the municipal area of Cape Agulhas Local Municipality (WC033), and including them into the municipal area of Theewaterskloof Local Municipality (WC031).
Western Cape	DEM6350	Drakenstein Local Municipality, Stellenbosch Local Municipality, Cape Winelands District Municipality	Proposed redetermination of municipal boundaries of Drakenstein Local Municipality (WC023), Stellenbosch Local Municipality (WC024) by excluding a portion of the farm Boschendal 1674 from the municipal area of Drakenstein Local Municipality (WC023) and

PROVINCE	DEM NUMBER	AFFECTED MUNICIPALITIES	DESCRIPTION
			including it into the municipal area of Stellenbosch Local Municipality (WC024).

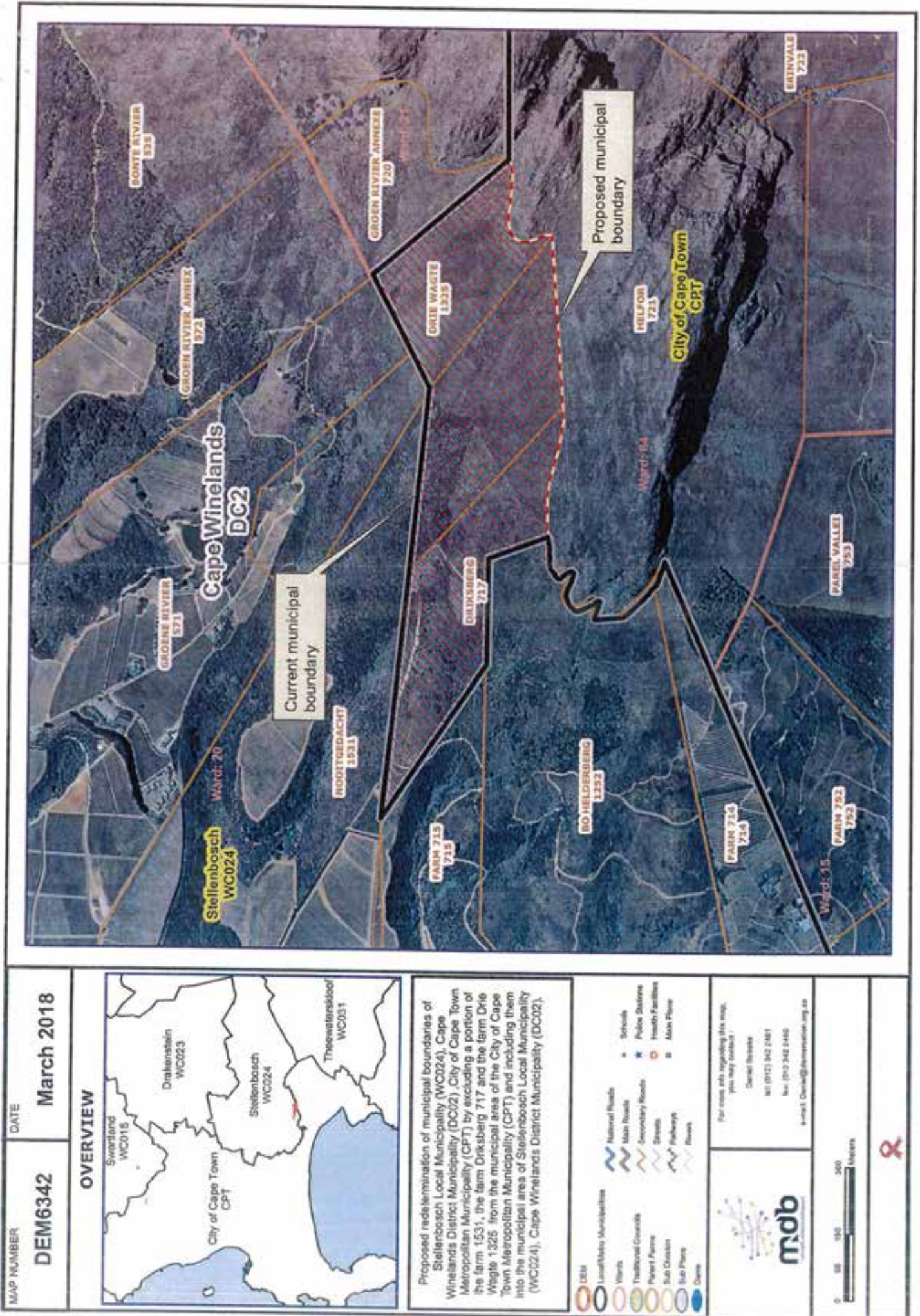
Annexure 2.1

Map (DEM No: 6309)



MAP NUMBER DEM6309	DATE March 2018	OVERVIEW	
		<p>Proposed redetermination of municipal boundaries of Stellenbosch Local Municipality (WC024), Cape Winelands District Municipality (DC02) and City of Cape Town Metropolitan Municipality (CPT) by excluding a portion of farm Bank Jonker 155 from the municipal area of City of Cape Town Metropolitan Municipality (CPT) and including it into the municipal area of Stellenbosch Local Municipality (WC024), Cape Winelands District Municipality (DC02).</p>	
		<p>For more info regarding this map, you may contact:</p> <p>Daniel Belsare tel: (021) 342 2481 fax: (021) 342 2480 e-mail: Daniel@demarcation.org.za</p>	
		0 348 700 1 400 Meters	



Annexure 2.2
Map (DEM No: 6324)



Annexure 2.3
Map (DEM No: 6329)

MAP NUMBER DEM6329	DATE March 2018	OVERVIEW	
		<p>Proposed redetermination of municipal boundaries of Stellenbosch Local Municipality (WC024), Cape Winelands District Municipality (DC02) and City of Cape Town Metropolitan Municipality (CPT) by excluding a portion of the remainder of Eerste River Town Allotment from the municipal area of Stellenbosch Local Municipality (WC024), Cape Winelands District Municipality (DC02) and including it into the municipal area of City of Cape Town Metropolitan Municipality (CPT).</p>	
		<p>For more info regarding this map, you may contact:</p> <p style="text-align: right;"> District Engineer Tel: (021) 342 2481 Fax: (021) 342 2488 e-mail: District@femsa.co.za </p>	
			
			



Annexure 2.4
Map (DEM No: 6331)



MAP NUMBER
DEM6331

DATE
March 2018

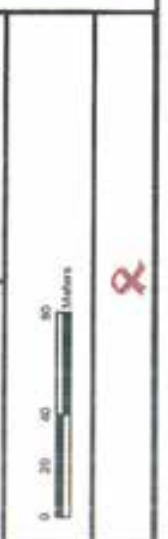


Proposed redetermination of municipal boundaries of Stellenbosch Local Municipality (WC024), Cape Wineyards District Municipality (DC02) and City of Cape Town Metropolitan Municipality (CPT) by aligning the municipal boundary of City of Cape Town Metropolitan Municipality (CPT) and Stellenbosch Local Municipality (WC024), Cape Wineyards District Municipality (DC02) to the southern boundary of Erf 222 of Raitshy of Stellenbosch Allotment area.







For more info regarding this map, please contact:

Geospatial Services
 Tel: (021) 242 2461
 Fax: (021) 242 2460
 e-mail: Geospatial@capetown.gov.za



Annexure 2.5
Map (DEM No: 6333)

MAP NUMBER DEM6333	DATE March 2018	OVERVIEW	
		<p>Proposed redetermination of municipal boundaries of Stellenbosch Local Municipality (WC024), Cape Winelands District Municipality (DC02) and City of Cape Town Metropolitan Municipality (CPT) by enclosing a portion of farm Koopmanskloof Noed 216 from the municipal area of the City of Cape Town Metropolitan Municipality (CPT) and including it into the municipal area of Stellenbosch Local Municipality (WC024), Cape Winelands District Municipality (DC02) and excluding a portion of the farm Koopmanskloof 221 from the municipal area of Stellenbosch Local Municipality (WC024), Cape Winelands District Municipality (DC02) and including it into the municipal area of the City of Cape Town Metropolitan Municipality (CPT).</p>	
		<p>For more info regarding this map, please contact:</p> <p>Demet Schutte tel: (021) 842 2481 fax: (021) 842 2482 e-mail: Demet@overstrand.gov.za</p>	
			

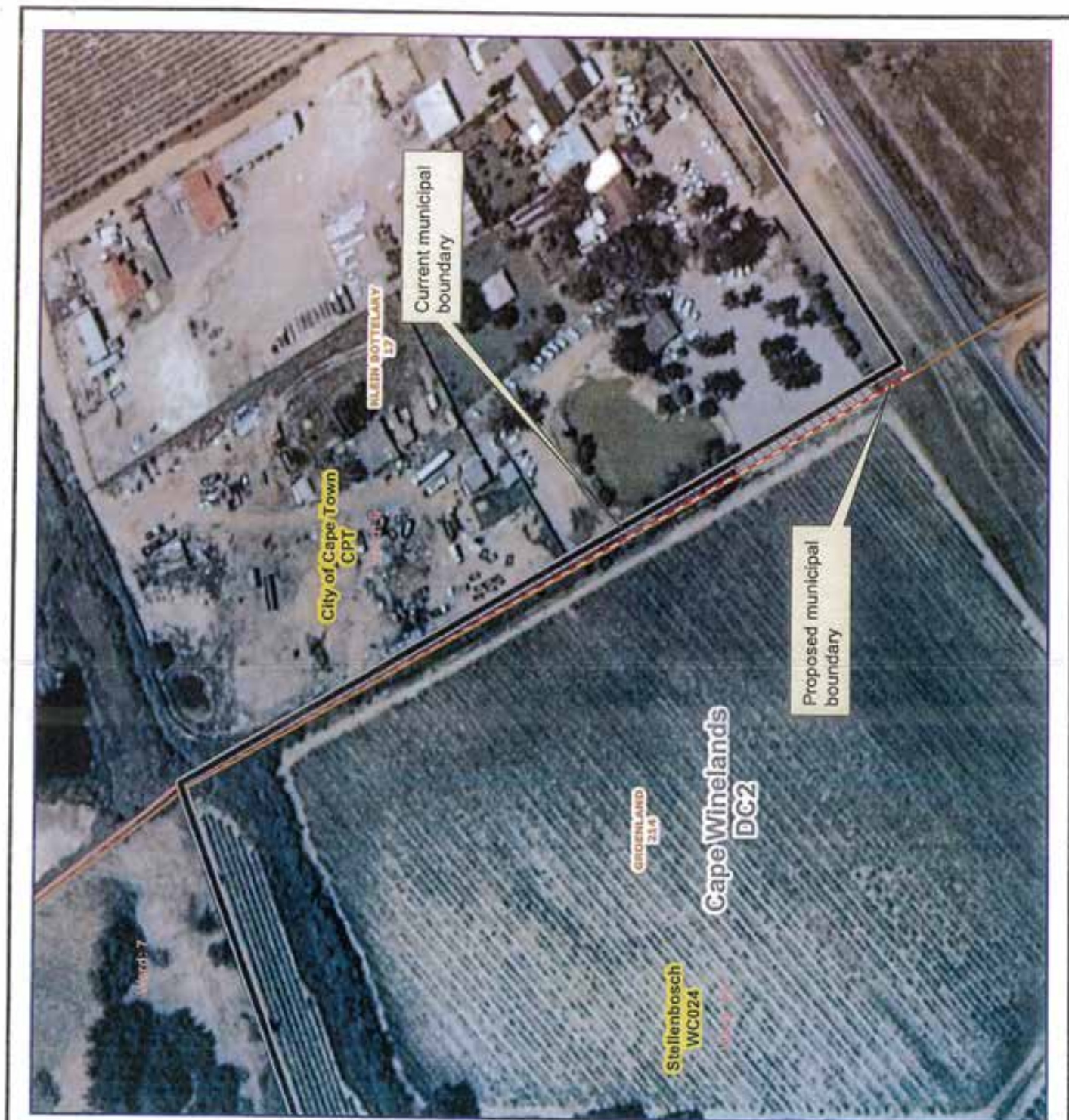


Annexure 2.6
Map (DEM No: 6335)



<p>MAP NUMBER DEM6335</p>	<p>DATE March 2018</p>
<p>OVERVIEW</p>	
<p>Proposed redetermination of municipal boundaries of Stellenbosch Local Municipality (WC024), Cape Winelands District Municipality (DC024), and City of Cape Town Metropolitan Municipality (CPT) by excluding a portion of portion 29 of the farm Klein Bottelary 17 from the municipal area of the City of Cape Town Metropolitan Municipality (CPT) and including it into the municipal area of Stellenbosch Local Municipality (WC024), Cape Winelands District Municipality (DC024).</p>	
<p>Legend</p> <ul style="list-style-type: none"> DCM Local/Metro Municipalities Wards Traditional Councils Parent Farms Sub Divisions Sub Farms Dams National Roads Main Roads Secondary Roads Streets Roadways Rivers Schools Police Stations Health Facilities Main Place 	<p>For more info regarding this map, you may contact:</p> <p>David Sebake Tel: (021) 542 2481 Fax: (021) 542 2480 e-mail: David@demarcation.org.za</p>
<p>0 45 90 180 Meters</p> <p>mob</p>	

Annexure 2.7
Map (DEM No: 6336)



MAP NUMBER
DEM6336

DATE
March 2018



Proposed redetermination of municipal boundaries of Stellenbosch Local Municipality (WC024), Cape Winelands District Municipality (DC02), City of Cape Town Metropolitan Municipality (CPT) by excluding a portion of the farm Klein Bottelary 17 from the municipal area of Stellenbosch Local Municipality (WC024), Cape Winelands District Municipality (DC02) and including it into the municipal area of the City of Cape Town Metropolitan Municipality (CPT).

- DEM
- Local/Metro Municipalities
- Wards
- Traditional Councils
- Parent Farms
- Sub-Clusters
- Sub-Places
- Dams
- National Roads
- Main Roads
- Secondary Roads
- Streets
- Highways
- Rivers
- Schools
- Police Stations
- Health Facilities
- Main Place

For more info regarding this map, you may contact:

David Sebode
Tel: (021) 342 2461
Fax: (021) 242 2480
e-mail: dem@demarcation.org.za






Annexure 2.8
Map (DEM No: 6337)



<p>MAP NUMBER DEM6337</p>	<p>DATE March 2018</p>
<p>OVERVIEW</p>	
<p>Proposed redetermination of municipal boundaries of Stellenbosch Local Municipality (WC024), Cape Winelands District Municipality (DC02) and City of Cape Town Metropolitan Municipality (CPT) by excluding a portion of the Remainder of farm Haasendal 222 from the municipal area of the City of Cape Town Metropolitan Municipality (CPT) and including it into the municipal area of Stellenbosch Local Municipality (WC024), Cape Winelands District Municipality (DC02).</p>	
<p>DCM</p> <ul style="list-style-type: none"> Local/Metro Municipalities Wards Traditional Councils Parish Farms Sub Divisions Sub Places Clubs 	<p>National Roads</p> <ul style="list-style-type: none"> Main Roads Secondary Roads Streets Railways Rivers
<p>Schools</p> <ul style="list-style-type: none"> Police Stations Health Facilities Water Pumps 	<p>For more info regarding this map, you may contact:</p> <p>Debra Seelme tel: (0)21 242 2481 fax: (0)21 242 2485 e-mail: Debra@demarcation.org.za</p> <p>0 30 60 120 Meters</p>

Annexure 2.9
Map (DEM No: 6338)

MAP NUMBER DEM6338	DATE March 2018
OVERVIEW	
	
<p>Proposed redetermination of municipal boundaries of Stellenbosch Local Municipality (WC024), Cape Winelands District Municipality (DC02) and City of Cape Town Metropolitan Municipality (CPT) by excluding portions 99, 106, 109 and 112 of the farm Haasendal 222 from the municipal area of Stellenbosch Local Municipality (WC024), Cape Winelands District Municipality (DC02) and including them into the municipal area of the City of Cape Town Metropolitan Municipality (CPT).</p>	
DEM Local/Metro Municipalities Wards Traditional Councils Parent Farms Sub-Division Sub-Places Dams	National Roads Main Roads Secondary Roads Streets Railway Rivers
Schools Police Stations Health Facilities Main Places	For more info regarding this map, please contact: David Siskine Tel: (021) 342 2481 Fax: (021) 342 2480 e-mail: david@demarcation.org.za
	Scale: 0 112.5 225 450 Meters 



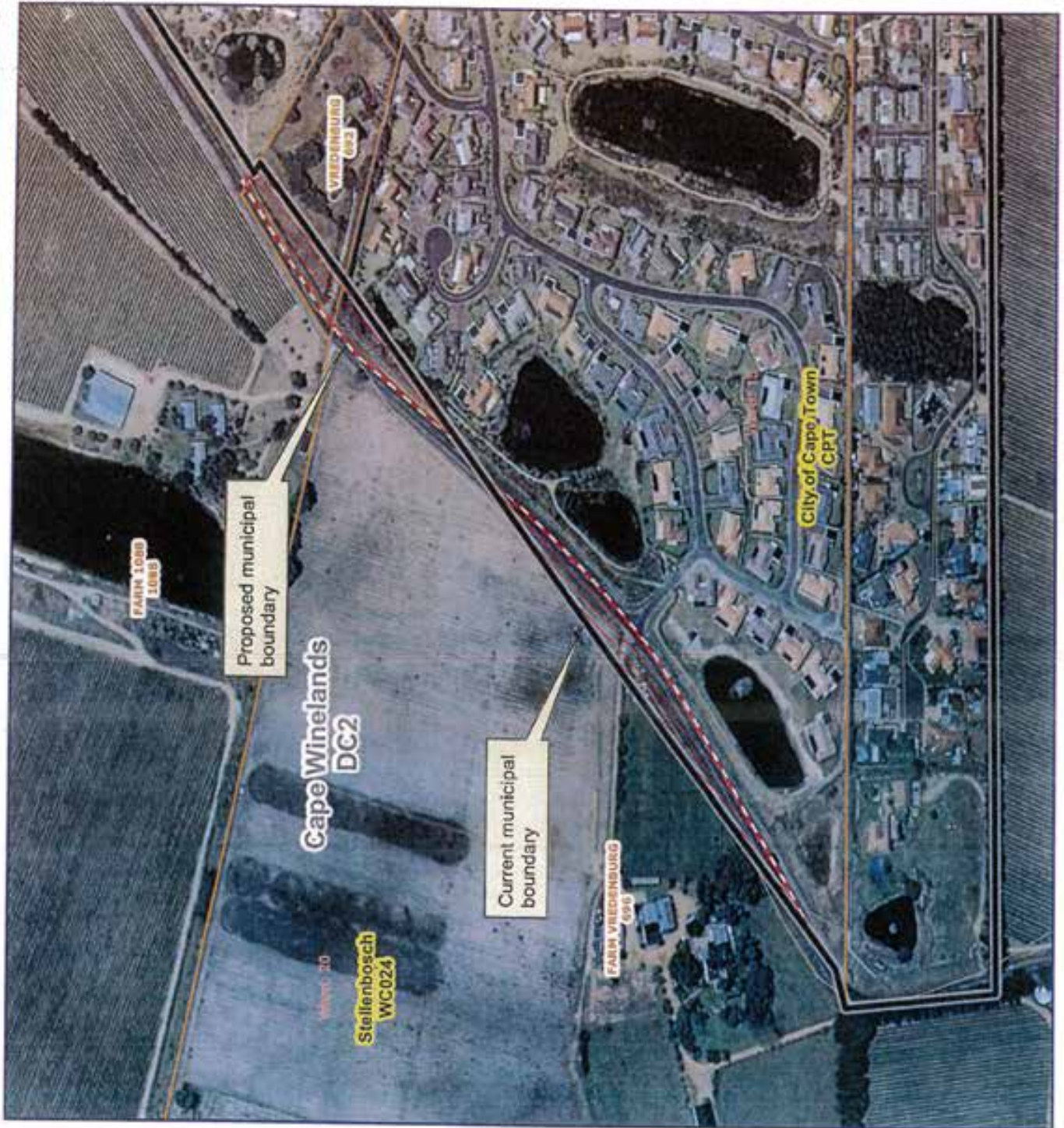
Annexure 2.10
Map (DEM No: 6340)



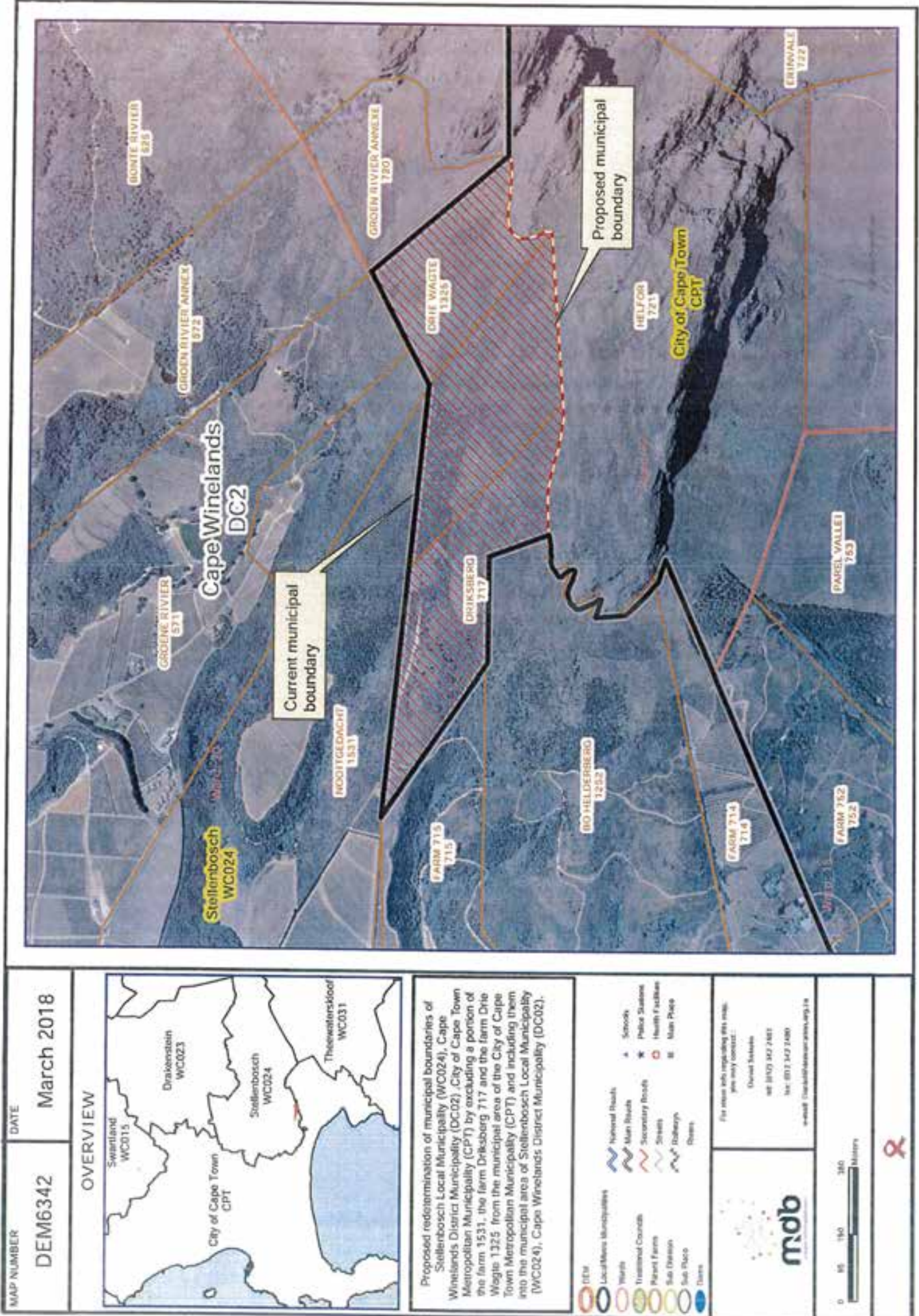
<p>MAP NUMBER DEM6340</p>	<p>DATE March 2018</p>
<p>OVERVIEW</p>	
<p>Proposed redetermination of municipal boundaries of Stellenbosch Local Municipality (WC024), Cape Winelands District Municipality (DC02) and City of Cape Town Metropolitan Municipality (CPT) by excluding farm 1528 from the municipal area of Stellenbosch Local Municipality (WC024), Cape Winelands District Municipality (DC02) and including it into the municipal area of City of Cape Town Metropolitan Municipality (CPT).</p>	
<p>DEB</p> <ul style="list-style-type: none"> Local/Metro Municipalities Wards Traditional Councils Peasant Farms Sub Divisions Sub Place Quays 	<ul style="list-style-type: none"> National Roads Main Roads Secondary Roads Streets Railways Rivers Schools Police Stations Health Facilities Main Place
	<p>For more info regarding this map, you may contact:</p> <p>David Dennis tel: (021) 342 2461 fax: (021) 342 2465 e-mail: David@demarcation.org.za</p>

Annexure 2.11
Map (DEM No: 6341)

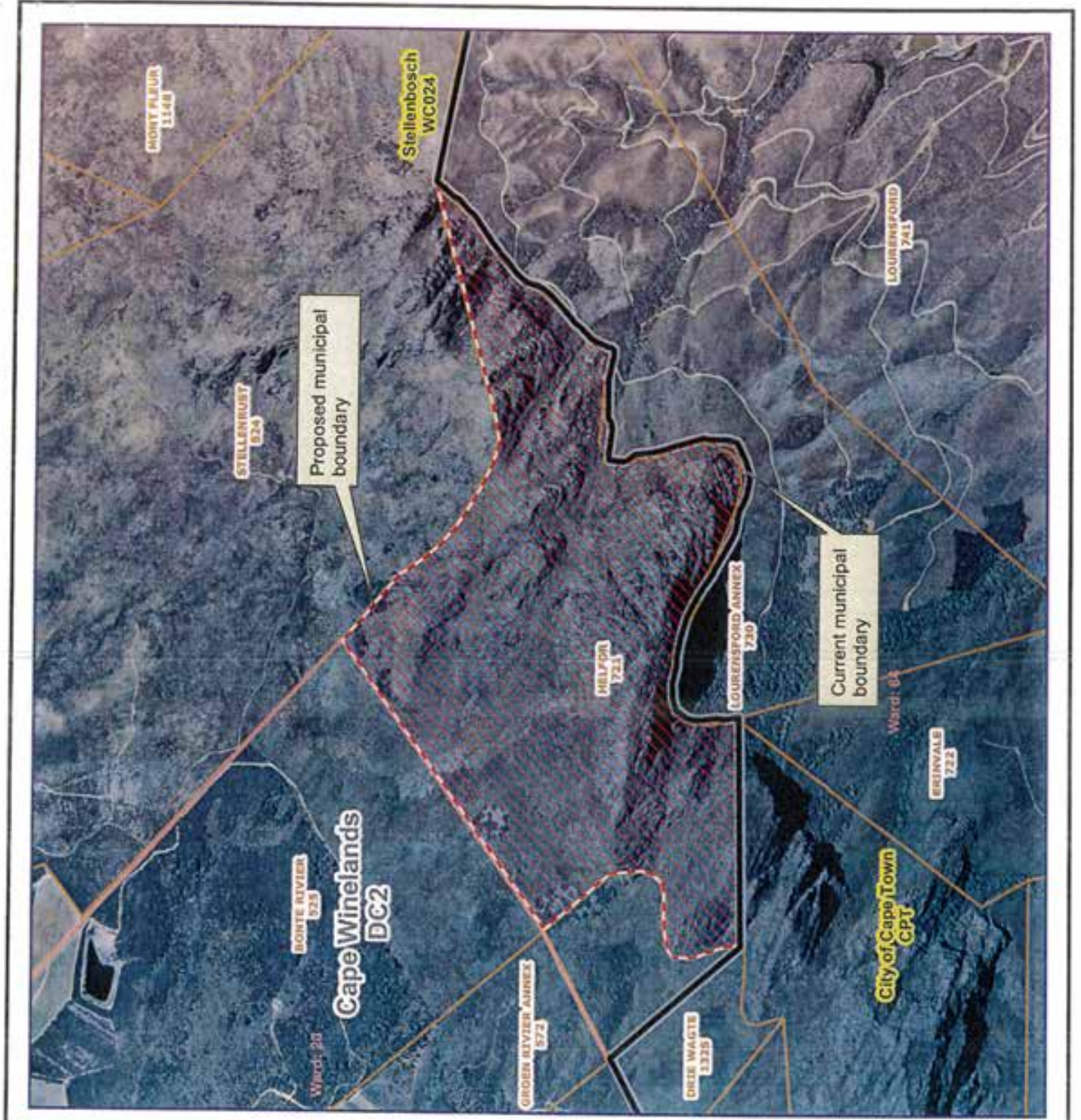
MAP NUMBER DEM6341	DATE March 2018	OVERVIEW	
		<p>1. Proposed readjustment of municipal boundaries of Stellenbosch Local Municipality (WC024), Cape Wineands District Municipality (DC02), City of Cape Town Metropolitan Municipality (CPT) by excluding a portion of the Vredenburg 696 from the municipal area of Stellenbosch Local Municipality (WC024), Cape Wineands District Municipality (DC02) and including it into the municipal area of the City of Cape Town Metropolitan Municipality (CPT).</p> <p>2. Proposed readjustment of municipal boundaries of Stellenbosch Local Municipality (WC024), Cape Wineands District Municipality (DC02), City of Cape Town Metropolitan Municipality (CPT) by including a portion of the area Vredenburg 692 from the municipal area of the City of Cape Town Metropolitan Municipality (CPT) and including it into the municipal area of Stellenbosch Local Municipality (WC024), Cape Wineands District Municipality (DC02).</p>	
		<p>For more info regarding this map, you may contact:</p> <p> Daniel Sebeka tel: (012) 342 2461 fax: (012) 342 2465 e-mail: DSebeka@demunicipal.gov.za </p>	
		0 50 100 Meters	



Annexure 2.12
Map (DEM No: 6342)



Annexure 2.13
Map (DEM No: 6343)



MAP NUMBER
DEM6343

DATE
March 2018



Proposed redetermination of municipal boundaries of Stellenbosch Local Municipality (WC024), Cape Winelands District Municipality (DC02) and City of Cape Town Metropolitan Municipality (CPT) by excluding a portion of farm Heleor 721 from the municipal area of Stellenbosch Local Municipality (WC024), Cape Winelands District Municipality (DC02) and including it into the municipal area of the City of Cape Town Metropolitan Municipality (CPT).

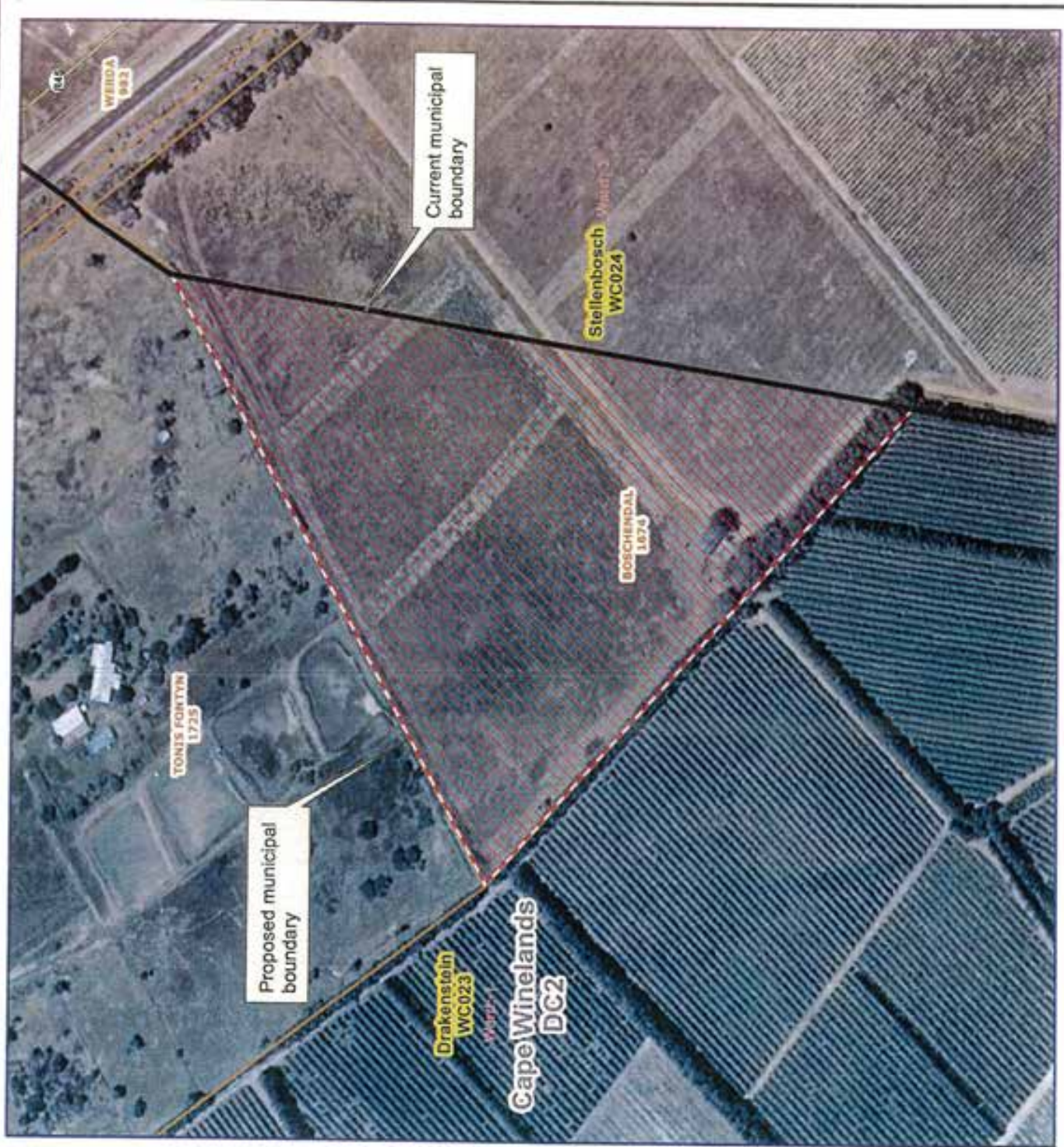
- DSM
- LocalMunis Municipalities
- Wards
- Traditional Councils
- Parent Farms
- Robt Dribbler
- Sub-Phone
- Dams
- National Roads
- Main Roads
- Secondary Roads
- Streets
- Railways
- Rivers
- Schools
- Police Stations
- Health Facilities
- Main Roads

For more info regarding this map, please contact:

David Seebode
Tel: (021) 342 2451
Fax: (021) 342 2480
e-mail: David@demarcations.org.za



Annexure 2.14
Map (DEM No: 6350)

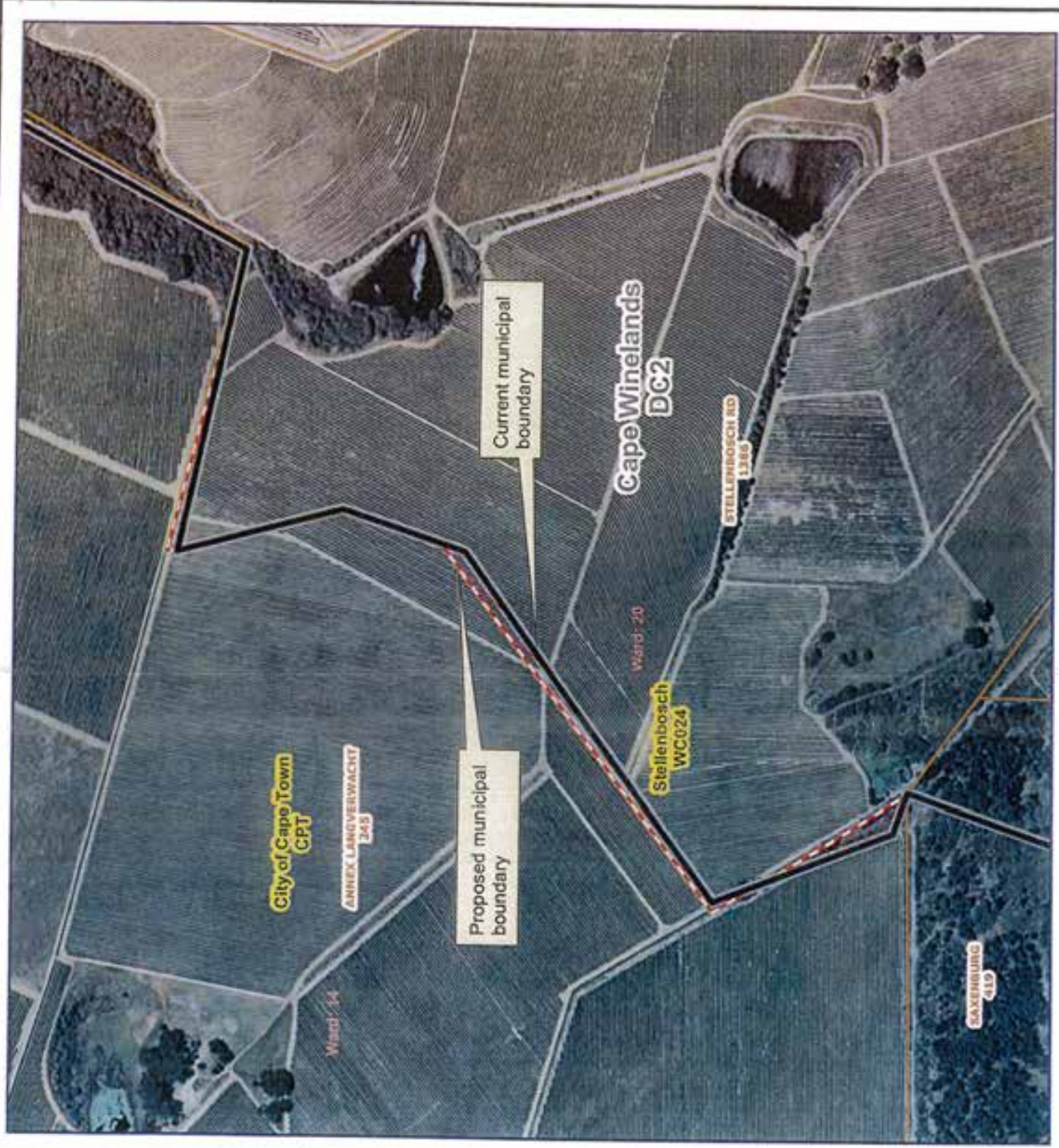


MAP NUMBER DEM6350	DATE March 2018	OVERVIEW				
		<p>Proposed redetermination of municipal boundaries of Drakenstein Local Municipality (WC023), Stellenbosch Local Municipality (WC024) by excluding a portion of the farm Boschendal 1674 from the municipal area of Drakenstein Local Municipality (WC023) and including it into the municipal area of Stellenbosch Local Municipality (WC024).</p>	<table border="0" style="width: 100%;"> <tr> <td style="font-size: 8px;"> <ul style="list-style-type: none"> ● Local/Main Municipalities ● Wards ● Traditional Councils ● Parent Farms ● Sub Divisions ● Sub-Place ● Clans </td> <td style="font-size: 8px;"> <ul style="list-style-type: none"> ~ National Roads ~ Main Roads ~ Secondary Roads ~ Streets ~ Railway ~ Private </td> <td style="font-size: 8px;"> <ul style="list-style-type: none"> ● Schools ● Police Stations ● Health Facilities ● Main Place </td> </tr> </table>	<ul style="list-style-type: none"> ● Local/Main Municipalities ● Wards ● Traditional Councils ● Parent Farms ● Sub Divisions ● Sub-Place ● Clans 	<ul style="list-style-type: none"> ~ National Roads ~ Main Roads ~ Secondary Roads ~ Streets ~ Railway ~ Private 	<ul style="list-style-type: none"> ● Schools ● Police Stations ● Health Facilities ● Main Place
<ul style="list-style-type: none"> ● Local/Main Municipalities ● Wards ● Traditional Councils ● Parent Farms ● Sub Divisions ● Sub-Place ● Clans 	<ul style="list-style-type: none"> ~ National Roads ~ Main Roads ~ Secondary Roads ~ Streets ~ Railway ~ Private 	<ul style="list-style-type: none"> ● Schools ● Police Stations ● Health Facilities ● Main Place 				
		For more info regarding this map, you may contact: Dawnel Davelle tel: (021) 342 2461 fax: (021) 342 2468 email: Dawnel@demarcation.org.za	Scale: 0 25 50 100 Meters 			

Annexure 2.15

Map (DEM No: 6325)

MAP NUMBER DEM6325	DATE March 2018	OVERVIEW	
		<p>Proposed redetermination of municipal boundaries of Stellenbosch Local Municipality (WC024), Cape WineLands District Municipality (DC02) and City of Cape Town Metropolitan Municipality (CPT) by attaching a portion of farm 1386 and a portion of farms 1905 from the municipal area of the City of Cape Town Metropolitan Municipality (CPT) and including them into the municipal area of Stellenbosch Local Municipality (WC024), Cape WineLands District Municipality (DC02) and including a portion of the farm Fairview 245 from the municipal area of Stellenbosch Local Municipality (WC024), Cape WineLands District Municipality (DC02) and including it into the municipal area of the City of Cape Town Metropolitan Municipality (CPT).</p>	<p>For more info regarding this map, you may contact:</p> <p> Cheryl Schutte Tel: (021) 342 2461 Fax: (021) 342 2465 e-mail: Drawing@metamunicipal.org.za </p>



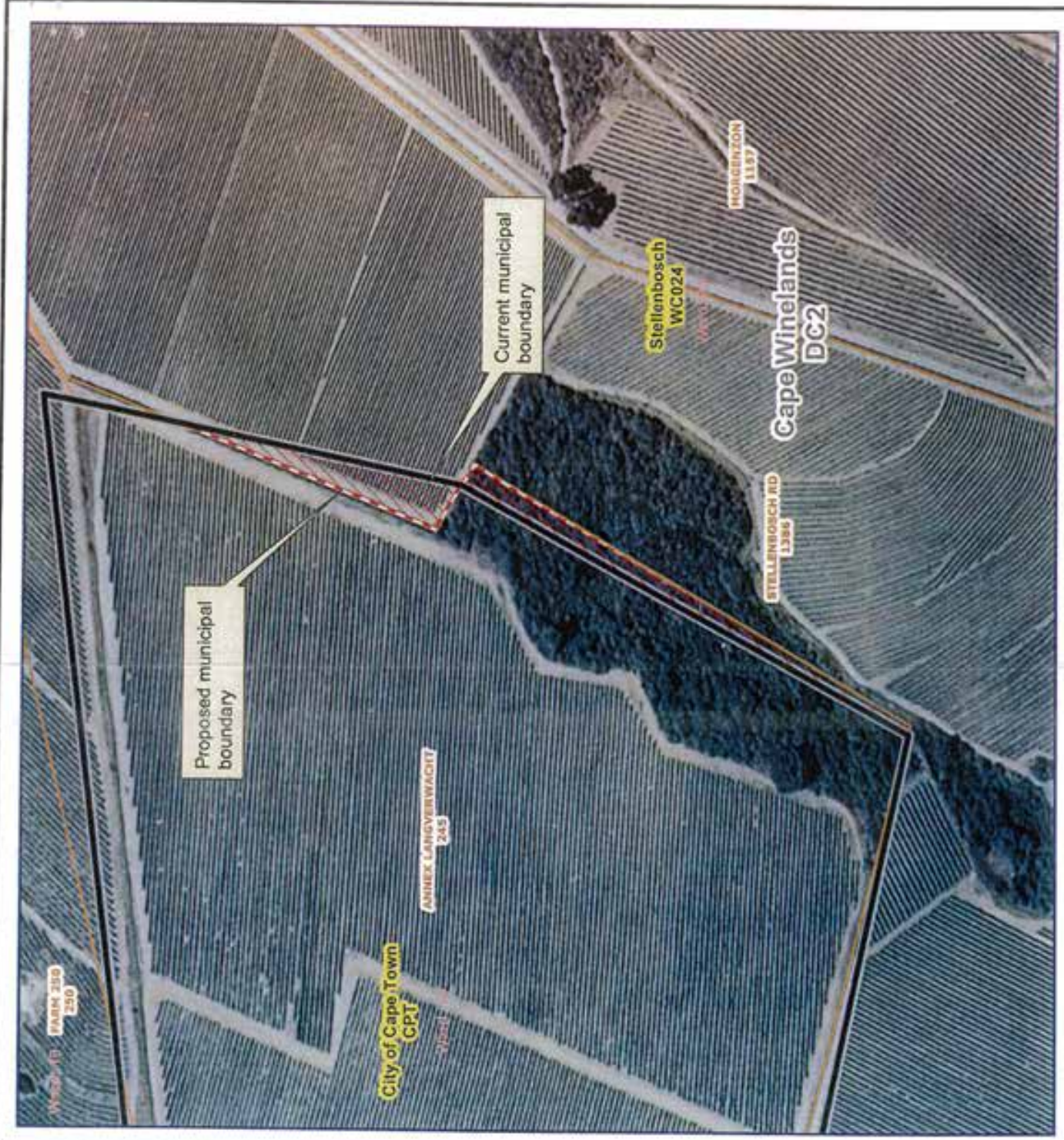
Annexure 2.16
Map (DEM No: 6334)



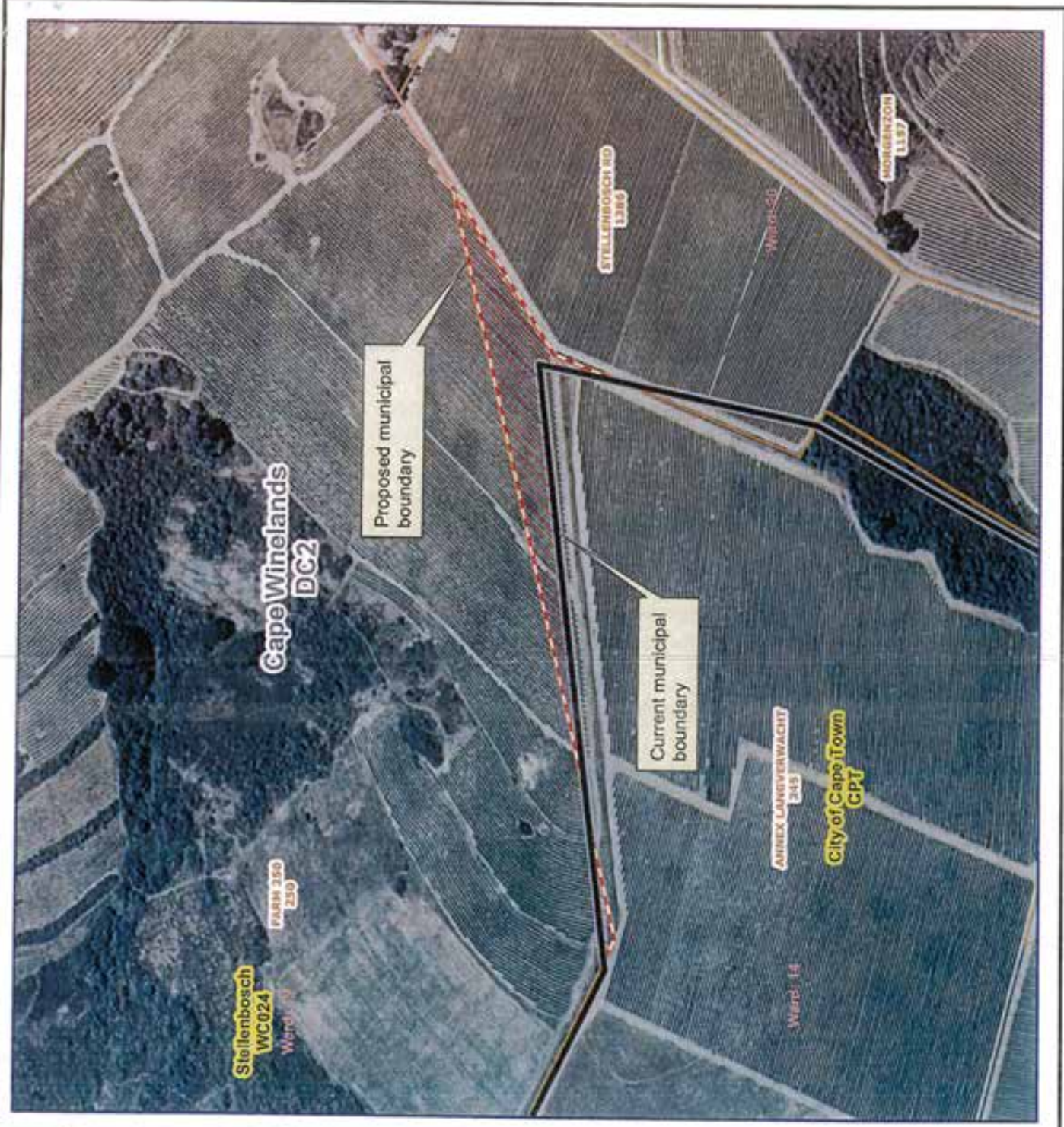
<p>MAP NUMBER DEM6334</p>	<p>DATE March 2018</p>
<p>OVERVIEW</p>	
<p>Proposed redetermination of municipal boundaries of Stellenbosch Local Municipality (WC024), Cape WineLands District Municipality (DC02) and City of Cape Town Metropolitan Municipality (CPT) by excluding a portion of the farm Koopmans Kloof 221 from the municipal area of Stellenbosch Local Municipality (WC024), Cape WineLands District Municipality (DC02) and including it into the municipal area of the City of Cape Town Metropolitan Municipality (CPT).</p>	
<p>Legend</p> <ul style="list-style-type: none"> DEM Local/Metro Municipalities Wards Traditional Councils Pepper Farms Sub Divisions Sub Phases Dams Natural Roads Main Roads Secondary Roads Streets Railways Rivers Schools Police Stations Health Facilities Main Phases 	<p>For more info regarding this map, you may contact:</p> <p>Daniel Seltman Tel: (021) 342 2481 Fax: (021) 342 2480 e-mail: Dan4@demunicipal.org.za</p>
<p>0 37.5 75 150 Meters</p>	

Annexure 2.17
Map (DEM No: 6324)

MAP NUMBER DEM6324	DATE March 2018
OVERVIEW	
	<p>Proposed redetermination of municipal boundaries of Stellenbosch Local Municipality (WC026), Cape Winelands District Municipality (DC02) and City of Cape Town Metropolitan Municipality (CPT) by excluding a portion of farms 1586 and a portion of farm 1585 from the municipal area of the City of Cape Town Metropolitan Municipality (CPT) and including them into the municipal area of Stellenbosch Local Municipality (WC026), Cape Winelands District Municipality (DC02) and excluding a portion of the farm F 619 view 245 from the municipal area of Stellenbosch Local Municipality (WC026), Cape Winelands District Municipality (DC02) and including it into the municipal area of the City of Cape Town Metropolitan Municipality (CPT).</p>
	For more info regarding this map, please contact: Cheryl Seelake Tel: (012) 342 2481 Fax: (012) 342 2480 email: Cheryl@demunicipal.org.za



Annexure 2.14
Map (DEM No: 6339)



MAP NUMBER
DEM6339

DATE
March 2018



Proposed redetermination of municipal boundaries of Stellenbosch Local Municipality (WC024), Cape Winelands District Municipality (DC02) and City of Cape Town Metropolitan Municipality (CPT) by excluding a portion of farm Fairview 245 from the municipal area of Stellenbosch Local Municipality (WC024), Cape Winelands District Municipality (DC02) and including it into the municipal area of the City of Cape Town Metropolitan Municipality (CPT) and by including a portion of the farm 250 from the municipal area of the City of Cape Town Metropolitan Municipality (CPT) and including it into the municipal area of Stellenbosch Local Municipality (WC024), Cape Winelands District Municipality (DC02).

- DEM
- Local/Metro Municipality
- Ward
- Traditional Council
- Police Station
- School
- Health Facility
- Ment Place
- National Road
- Main Road
- Secondary Road
- Street
- Railway
- River
- Dam

For more info regarding this map, you may contact:

mab
 Cape Winelands
 Tel: (021) 542 2481
 Fax: (021) 542 2480
 e-mail: dem@demun.gov.za

